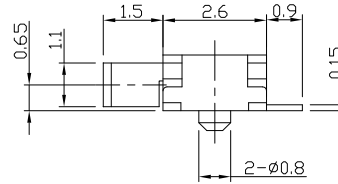
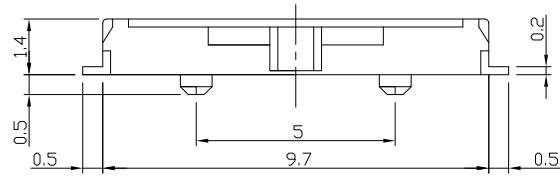




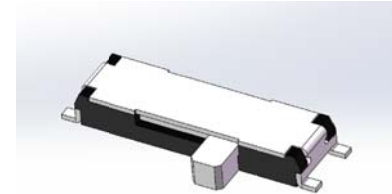
RoHS
Compliant
2002/95/EC

REV.	ECN.	NO.	APPD.

DIMENSIONS



PRODUCT IMAGE

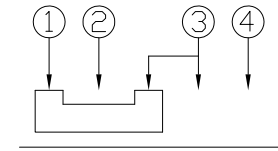


MODEL CODE

AS-1300AP-B

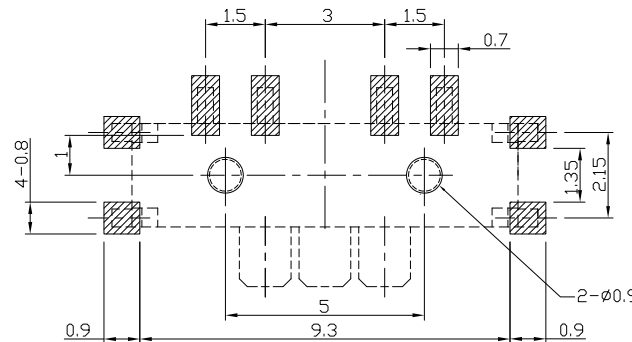
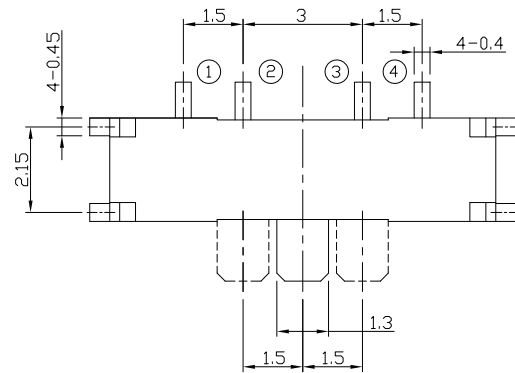
Knob Color	
B	Black

CIRCUIT DIAGRAM



P.C.B MOUNTING PATTERN DIMENSION

The following soldering patterns are recommended for reflow soldering



ELECTRO-MECHANICAL CHARACTERISTICS

Refer to additional specifications

Rating	DC 4V 0.3A
Circuit	1C-3P
Contact Resistance	70mΩ Max.
Travel	1.5 ± 0.3mm
Operating Force	150±100gf
Operating Life(cycles)	10,000

.X ±0.2	X. ±2'
UNITS mm	
MAT'L SEE NOTE	
FINISH SEE NOTE	
Q'TY	
<small>THESE DRAWINGS AND SPECIFICATIONS ARE THE PROPERTY OF ACCURATE INNOTECH INC AND SHALL NOT BE REPRODUCED, COPIED OR USED IN ANY MANNER WITHOUT THE PRIOR WRITTEN CONSENT OF ACCURATE INNOTECH INC.</small>	

龙创中业电子（深圳）有限公司

TITLE: MINI SLIDE SWITCH	PART NO.: AS-1300AP SERIES
DR: <i>Ricky</i> 2014/04/03	DWG NO.: ASI-1300AP
CHKD: <i>Ricky</i> 2014/04/03	SCALE SHEET REV. CUSTOMER 1:1 1/1 A DRAWING
APPD:	