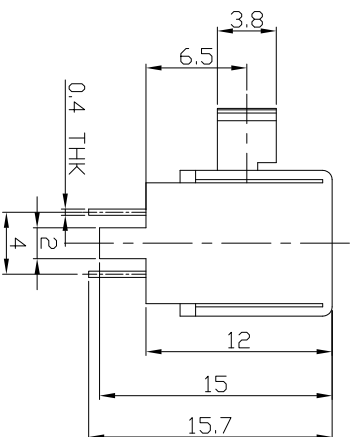
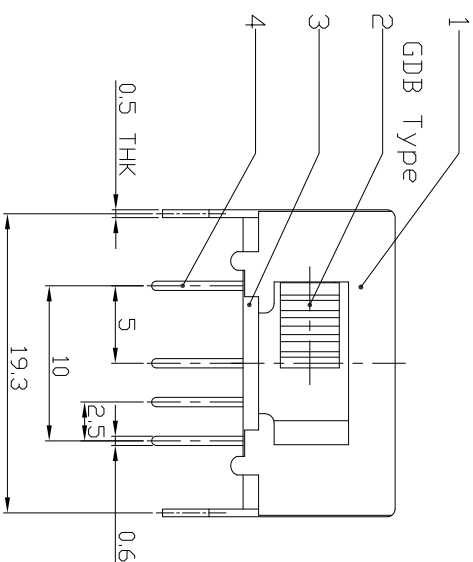
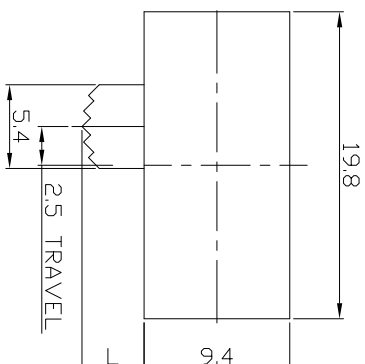




RoHS Compliant
2002/95/EC

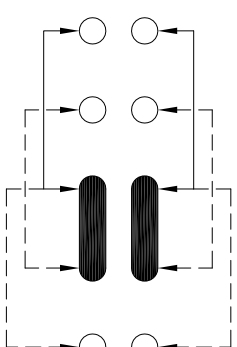
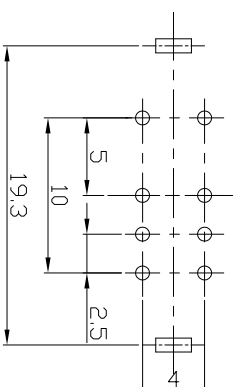
DIMENSIONS



REV.	ECN.	NO.	APPL.

MODEL CODE

SK-23E11-GDB



**P.C.B LAYOUT
BOTTOM VIEW**

CIRCUIT DIAGRAM

ELECTRO-MECHANICAL CHARACTERISTICS
Refer to additional specifications

RATING	0.3A 50V DC
CIRCUIT	2P3T
CONTACT RESISTANCE	100mΩ MAX.
TIMING	SHORTING
TRAVEL	2.5mm
OPERATING FORCE	250±100gf
OPERATING LIFE(cycles)	10,000

龙创中业电子（深圳）有限公司

TITLE: 龙创中业电子（深圳）有限公司
SLIDE SWITCH / HORIZONTAL
PART NO.: SK-23E11

UNITS	mm	DWG NO.:	ADL-23E11
MAT'L	SEE NOTE	SCALE	SHEET 1/1
FINISH	SEE NOTE	REV.	A
Q'TY	APP'D:	CUSTOMER DRAWING	

8	STEEL BALL	STEEL	1	NATURAL
7	SPRING	STEEL WIRE	1	NATURAL
6	CONTACT CLIP	PBS STRIP	2	AG PLATED
5	TERMINAL	BRASS STRIP	8	AG PLATED
4	BASE	PHENOLIC RESIN	1	NATURAL
3	KNOB	POM	1	BLACK
2	FRAME	STEEL STRIP	1	N. PLATED
1	PARTS	MATERIAL	Q'TY	FINISHING

WITHIN 1.5mm: ±0.1mm
OVER 1.5mm: ±0.2mm

THESE DRAWINGS AND SPECIFICATIONS ARE THE PROPERTY OF ACCURATE INNOTECH INC. AND SHALL NOT BE REPRODUCED, COPIED OR TRANSMITTED IN ANY FORM OR BY ANY MEANS WITHOUT THE WRITTEN CONSENT OF ACCURATE INNOTECH INC.