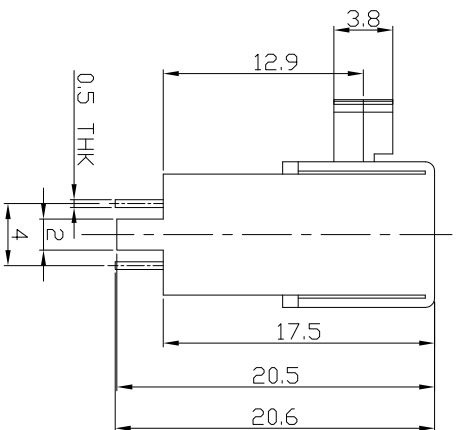
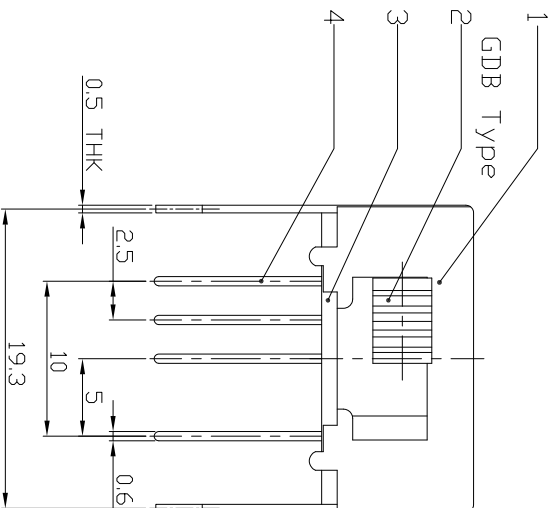
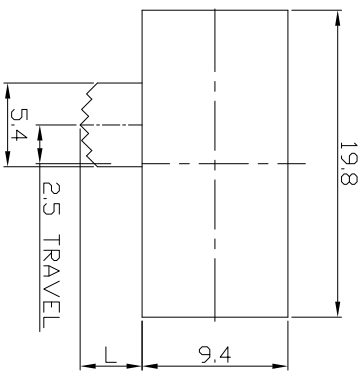




RoHS
Compliant
2002/95/EC

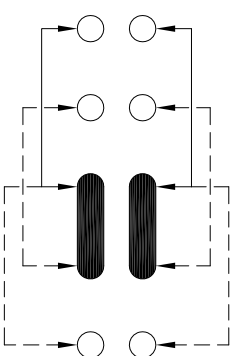
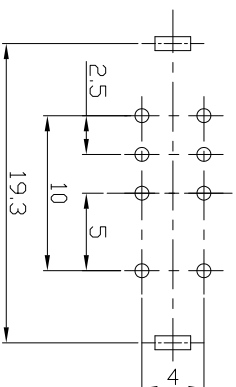
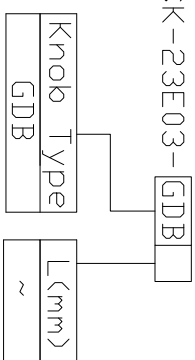
DIMENSIONS



REV.	ECN.	NO.	APPL.

MODEL CODE

SK-23E03-GDB



P.C.B LAYOUT
BOTTOM VIEW

CIRCUIT DIAGRAM

ELECTRO-MECHANICAL CHARACTERISTICS
Refer to additional specifications

RATING	0.3A 50V DC
CIRCUIT	2P3T
CONTACT RESISTANCE	100mΩ MAX.
TIMING	SHORTING
TRAVEL	2.5mm
OPERATING FORCE	200±80gf
OPERATING LIFE(cycles)	10,000

龙创中业电子（深圳）有限公司

TITLE: 龙创中业电子（深圳）有限公司
SLIDE SWITCH / HORIZONTAL

8	STEEL BALL	STEEL	1	NATURAL	WITHIN 1.5mm: ±0.1mm	UNITS	mm
7	SPRING	STEEL WIRE	1	NATURAL	OVER 1.5mm: ±0.2mm	MAT'L	SEE NOTE
6	CONTACT CLIP	PBS STRIP	2	AG PLATED		FINISH	SEE NOTE
5	CONTACT CLIP	PBS STRIP	2	AG PLATED		FINISH	SEE NOTE
4	TERMINAL	BRASS STRIP	8	AG PLATED		FINISH	SEE NOTE
3	BASE	PHENOLIC RESIN	1	NATURAL		FINISH	SEE NOTE
2	KNOB	POM	1	BLACK		FINISH	SEE NOTE
1	FRAME	STEEL STRIP	1	N. PLATED		FINISH	SEE NOTE
ND.	PARTS	MATERIAL	Q'TY	FINISHING		APP'D:	

DR: 2016/07/13
CHKD: 2016/07/13
SCALE: 1/1

PART NO.: SK-23E03
DWG NO.: ADL-23E03

WITHIN 1.5mm: ±0.1mm
OVER 1.5mm: ±0.2mm

REVISIONS

THESE DRAWINGS AND SPECIFICATIONS ARE THE PROPERTY OF ACCURATE INNOTECH INC. AND SHALL NOT BE REPRODUCED, COPIED OR TRANSMITTED IN ANY FORM OR BY ANY MEANS WITHOUT THE WRITTEN CONSENT OF ACCURATE INNOTECH INC.

APP'D: 21

1 2 3 4 5 6 7

CUSTOMER DRAWING