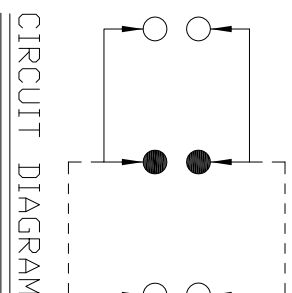
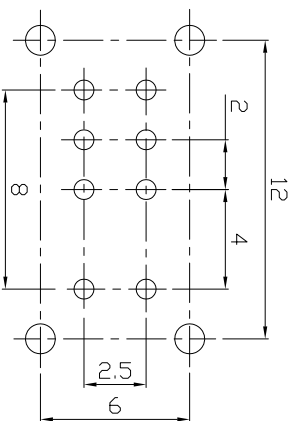
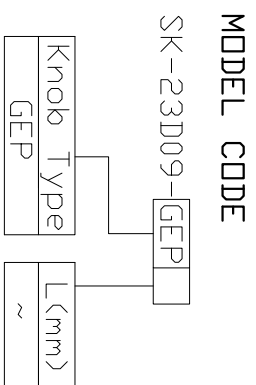
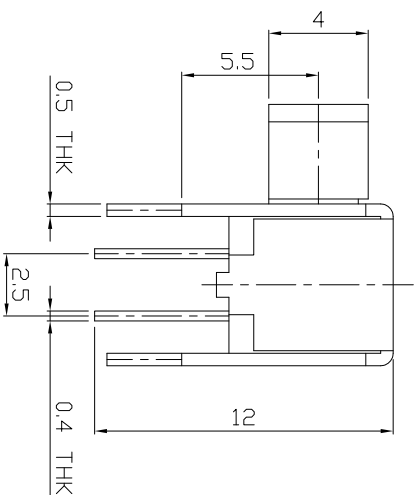
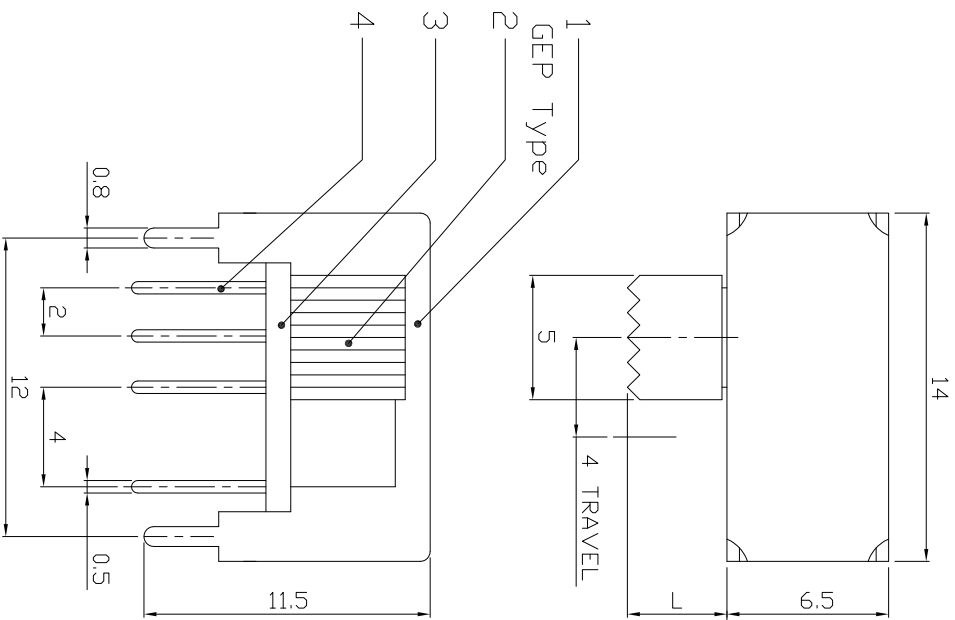




RoHS
Compliant
2002/95/EC

DIMENSIONS



P.C.B LAYOUT
BOTTOM VIEW

CIRCUIT DIAGRAM

ELECTRO-MECHANICAL CHARACTERISTICS

Refer to additional specifications

RATING	0.3A 50V DC
CIRCUIT	2P3T
CONTACT RESISTANCE	30mΩ MAX.
TIMING	SHORTING
TRAVEL	4mm
OPERATING FORCE	250±100gf
OPERATING LIFE(cycles)	10,000

8	STEEL BALL	SUS	1	NATURAL	WITHIN 1.5mm: ±0.1mm	UNITS	mm	<p>龙创中业电子（深圳）有限公司</p> <p>TITLE: SLIDE SWITCH / HORIZONTAL</p> <p>PART NO.: SK-23D09</p> <p>DWG NO.: AZJ-23D09</p>
7	SPRING	SUS WIRE	1	NATURAL	OVER 1.5mm: ±0.2mm	MAT'L	SEE NOTE	
6	CLIP	PBS	2	AG PLATED		FINISH	SEE NOTE	
4	TERMINAL	BRASS STRIP	6	AG PLATED		Q'TY	APPD:	
3	TERMINAL BASE	PHENOLIC RESIN	1	NATURAL		DR:	2016/08/11	
2	COVER	MILD STEEL	1	NI PLATED		CHKD:	2016/08/11	
1	KNDB	POM	1	BLACK		SCALE	1/1	
ND.	PARTS	MATERIAL	Q'TY	FINISHING		REV.	A	

THESE DRAWINGS AND SPECIFICATIONS ARE THE PROPERTY OF ACCURATE INNOTECH INC. AND SHALL NOT BE REPRODUCED, COPIED OR TRANSMITTED IN ANY FORM OR BY ANY MEANS WITHOUT THE WRITTEN CONSENT OF ACCURATE INNOTECH INC.

REV. ECN. NO. APPD.

CUSTOMER DRAWING