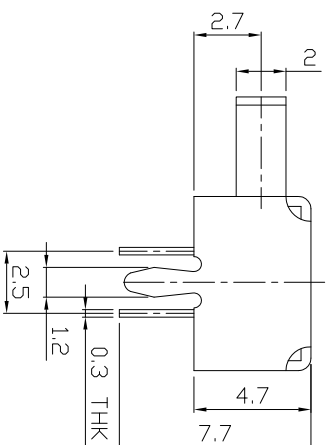
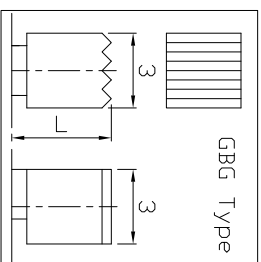
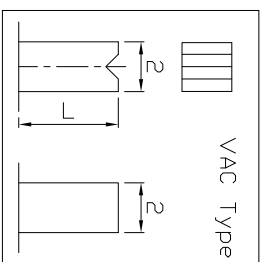
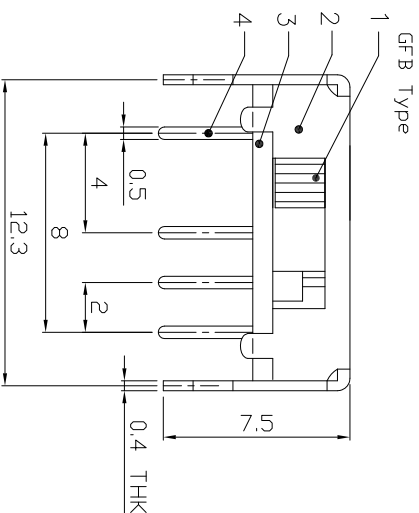
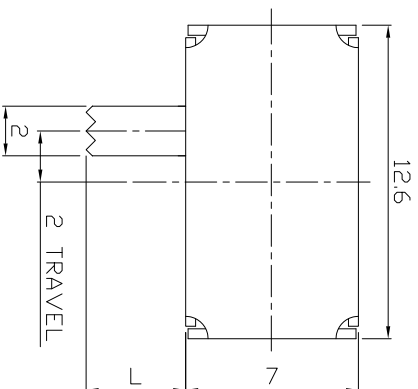




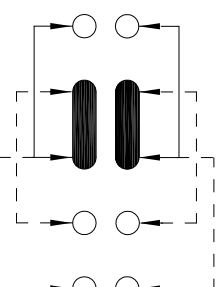
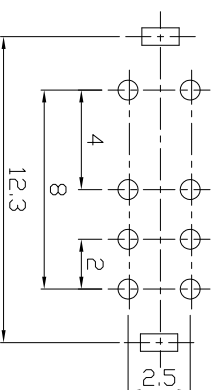
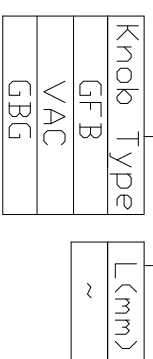
RoHS
Compliant
2002/95/EC

DIMENSIONS



MODEL CODE

SK-23D07-GFB



P.C.B LAYOUT BOTTOM VIEW

CIRCUIT DIAGRAM

ELECTRO-MECHANICAL CHARACTERISTICS

Refer to additional specifications

RATING	0.3A 50V DC
CIRCUIT	2P3T
CONTACT RESISTANCE	100mΩ MAX.
TIMING	SHORTING
TRAVEL	2mm
OPERATING FORCE	250±100gf
OPERATING LIFE(cycles)	10,000

8																			
7	SPRING PLATE	PBS STRIP	1	NATURAL	WITHIN 1.5mm: ±0.1mm	UNITS	mm												
6	CONTACT CLIP	PBS STRIP	2	Ag CLAD	OVER 1.5mm: ±0.2mm	MAT'L	SEE NOTE												
5	TERMINAL	BRASS STRIP	8	Ag CLAD		FINISH	SEE NOTE												
4	BASE	PHENOLIC RESIN	1	NATURAL		SEE NOTE													
3	FRAME	STEEL STRIP	1	Ni PLATED		DR:	2016/07/11	DWG NO.:	ADL-23D07										
2	KNOB	POM	1	BLACK		CHK'D:	2016/07/11	SCALE	1/1	REV.									
1	PARTS	MATERIAL	Q'TY	FINISHING		APPD:		SHEET	A	CUSTOMER									

龙创中业电子（深圳）有限公司

TITLE: SLIDE SWITCH / HORIZONTAL
PART NO.: SK-23D07

REV. ECN. NO. APPL.
DRAWING