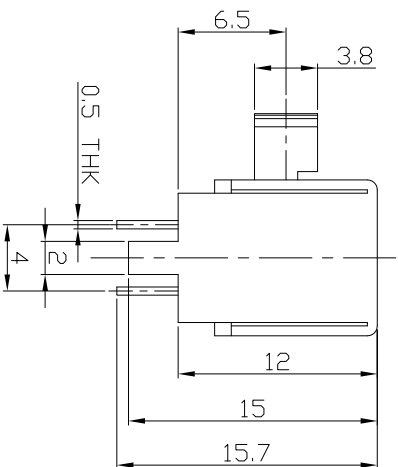
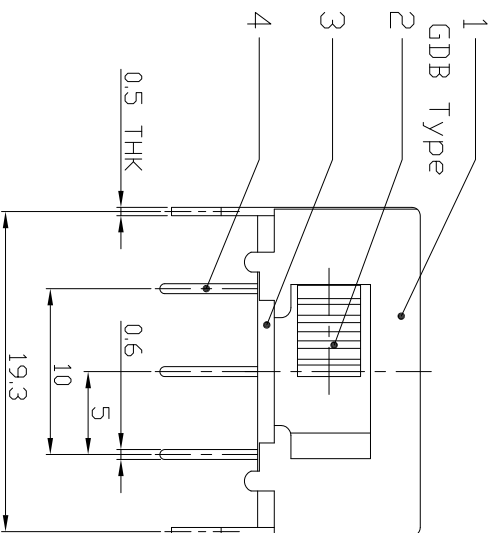
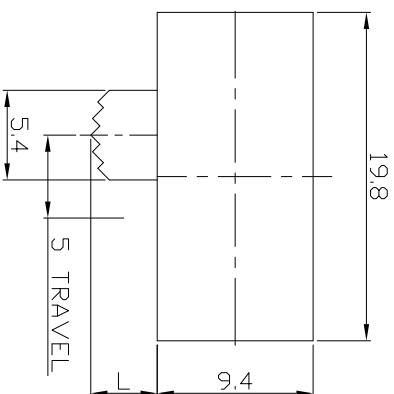




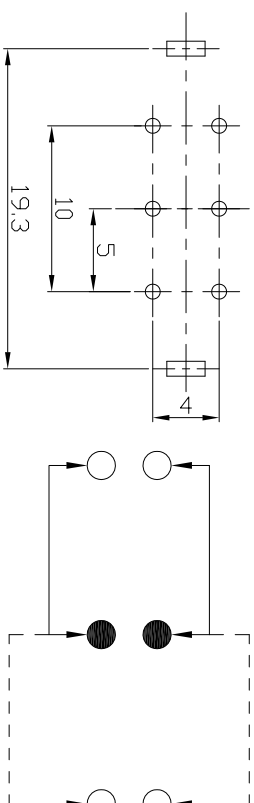
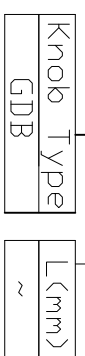
RoHS  
Compliant  
2002/95/EC

**DIMENSIONS**



**MODEL CODE**

SK-22 J03-GDB



**P.C.B LAYOUT  
BOTTOM VIEW**

**CIRCUIT DIAGRAM**

**ELECTRO-MECHANICAL CHARACTERISTICS**

Refer to additional specifications

RATING	0.3A 50V DC
CIRCUIT	2P2T
CONTACT RESISTANCE	100mΩ MAX.
TIMING	NON-SHORTING
TRAVEL	5mm
OPERATING FORCE	250±100gf
OPERATING LIFE(cycles)	10,000

8	STEEL BALL	STEEL	1	NATURAL
7	SPRING	STEEL WIRE	1	NATURAL
6	CONTACT CLIP	PBS STRIP	2	AG PLATED
4	TERMINAL	BRASS STRIP	6	AG PLATED
3	BASE	PHENOLIC RESIN	1	NATURAL
2	KNOB	POM	1	BLACK
1	FRAME	STEEL STRIP	1	Ni PLATED
ND.	PARTS	MATERIAL	Q'TY	FINISHING

WITHIN 1.5mm: ±0.1mm  
OVER 1.5mm: ±0.2mm

UNITS mm  
MATERIAL SEE NOTE  
FINISH SEE NOTE

**龙创中业电子（深圳）有限公司**

TITLE: SLIDE SWITCH / HORIZONTAL  
PART NO.: SK-22 J03

DR: *Rocky* 2016/06/28 DWG NO.: ADL-22 J03  
CHKD: *Rocky* 2016/06/28 SCALE SHEET REV.  
APPD: 2/1 1/1 A CUSTOMER DRAWING

REV.	ECN.	NO.	APPL.