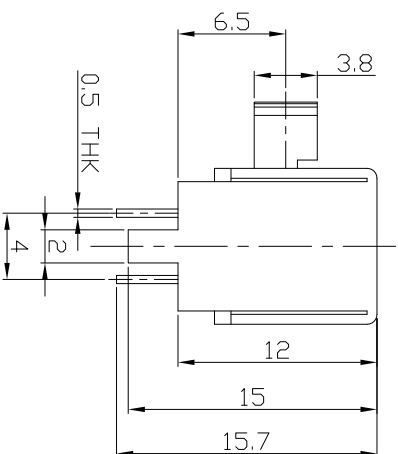
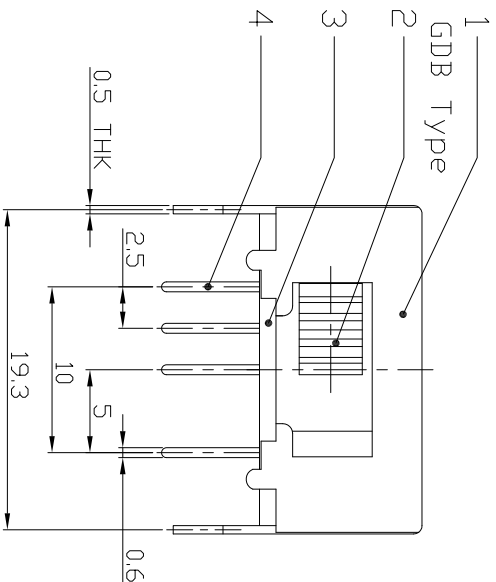
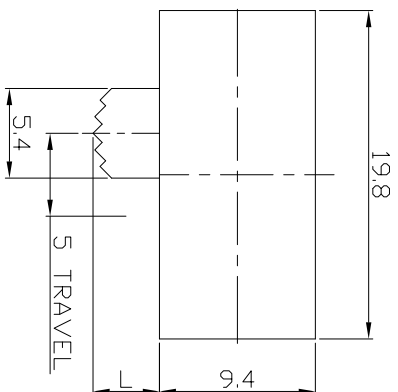




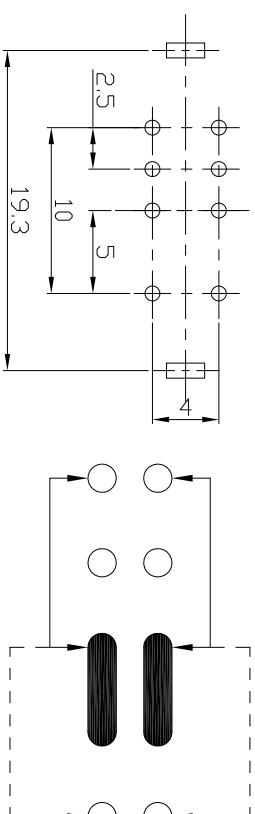
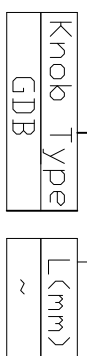
RoHS
Compliant
2002/95/EC

DIMENSIONS



MODEL CODE

SK-22 J11 - GDB



**P.C.B LAYOUT
BOTTOM VIEW**

CIRCUIT DIAGRAM

ELECTRO-MECHANICAL CHARACTERISTICS

Refer to additional specifications

RATING	0.3A 50V DC
CIRCUIT	2P2T
CONTACT RESISTANCE	100mΩ MAX.
TIMING	NON-SHORTING
TRAVEL	5mm
OPERATING FORCE	250±100gf
OPERATING LIFE(cycles)	10,000

8	STEEL BALL	STEEL	1	NATURAL	WITHIN 1.5mm: ±0.1mm
7	SPRING	STEEL WIRE	1	NATURAL	OVER 1.5mm: ±0.2mm
6	CONTACT CLIP	PBS STRIP	2	Ag PLATED	
5	TERMINAL	BRASS STRIP	8	Ag PLATED	
4	BASE	PHENOLIC RESIN	1	NATURAL	
3	KNOB	POM	1	BLACK	
2	FRAME	STEEL STRIP	1	Ni PLATED	
1	PARTS	MATERIAL	Q'TY	FINISHING	

THESE DRAWINGS AND SPECIFICATIONS ARE THE PROPERTY OF ACCURATE INNOTECH INC. AND SHALL NOT BE REPRODUCED, COPIED, PRINTED, OR OTHERWISE TRANSMITTED IN ANY FORM OR BY ANY MEANS WITHOUT THE WRITTEN CONSENT OF ACCURATE INNOTECH INC.

龙创中业电子（深圳）有限公司

TITLE: SLIDE SWITCH / HORIZONTAL

PART NO.: SK-22 J11

DR: *Rocky* 2016/06/28 DWG NO.: ADL-22 J11

CHKD: *Rocky* 2016/06/28 SCALE SHEET REV. 2/1 1/1 A

APPD: CUSTOMER DRAWING

REV.	ECN.	NO.	APPL.