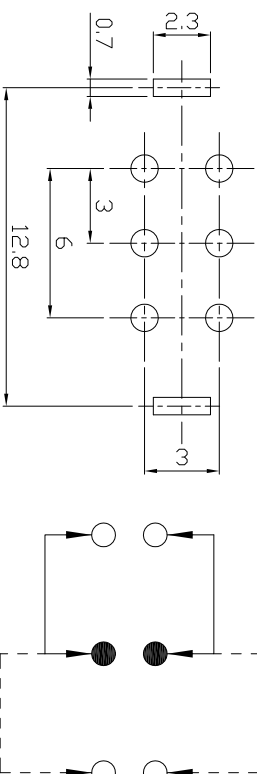
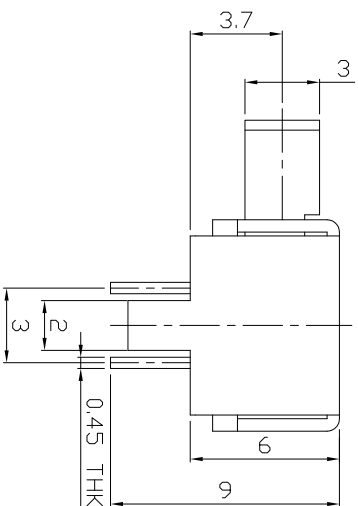
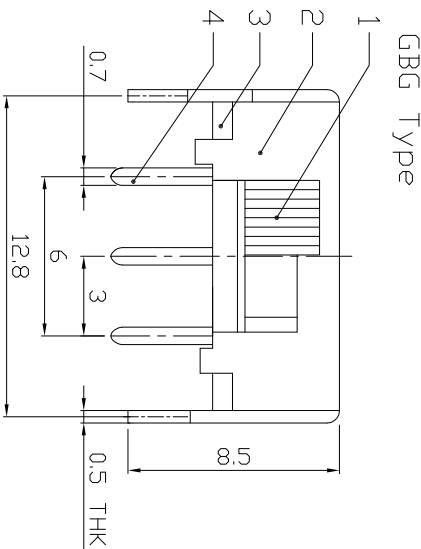
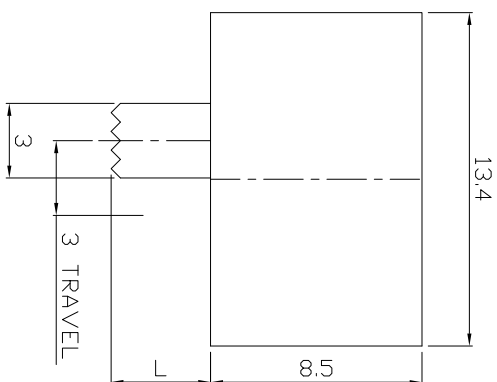




RoHS
Compliant
2002/95/EC

DIMENSIONS



MODEL CODE

SK-22F14-GBG



P.C.B LAYOUT
BOTTOM VIEW

ELECTRO-MECHANICAL CHARACTERISTICS

Refer to additional specifications

RATING	0.5A 50V DC
CIRCUIT	2P2T
CONTACT RESISTANCE	100mΩ MAX.
TIMING	NON-SHORTING
TRAVEL	3mm
OPERATING FORCE	250±100gf
OPERATING LIFE(cycles)	10,000

8					WITHIN 1.5mm: ±0.1mm	UNITS	mm				
7	CONTACT	BRASS STRIP	2	AG PLATED	OVER 1.5mm: ±0.2mm	MAT'L	SEE NOTE				
6	SPRING	STEEL WIRE	2	NATURAL		FINISH	SEE NOTE				
5	TERMINAL	BRASS STRIP	6	AG PLATED		SEE NOTE					
4	BASE	PHENOLIC RESIN	1	NATURAL		Q'TY					
3	FRAME	STEEL STRIP	1	NI PLATED		CHK'D:	2016/06/27	DWG NO.:	ADL-22F14	SCALE	3/1
2	KNDB	POM	1	BLACK		APP'D:	2016/06/27	REV.:	A	SHEET	1/1
1	PARTS	MATERIAL	Q'TY	FINISHING							

龙创中业电子（深圳）有限公司

TITLE: SK-22F14
SLIDE SWITCH / HORIZONTAL

DR: 2016/06/27
CHK'D: 2016/06/27
SCALE: 3/1
SHEET: 1/1
REV: A
CUSTOMER DRAWING

REV.	ECN.	NO.	APPD.