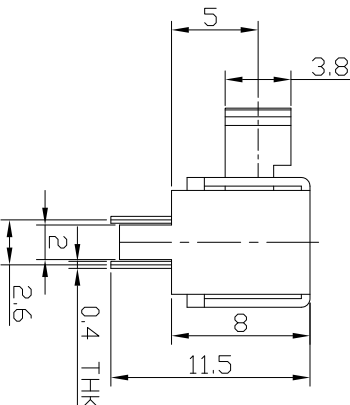
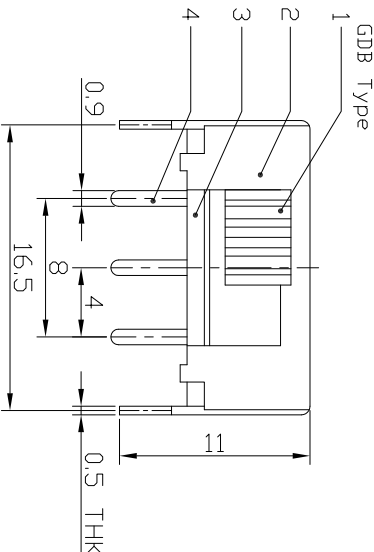
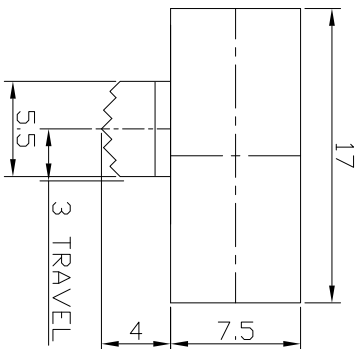




RoHS  
Compliant  
2002/95/EC

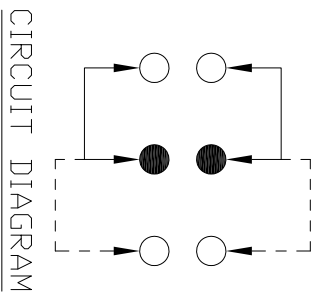
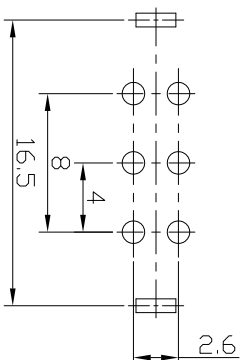
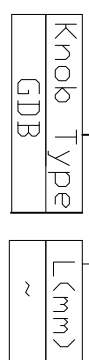
**DIMENSIONS**



REV.	ECN.	NO.	APPL.

**MODEL CODE**

SK-22F12-GDB



**ELECTRO-MECHANICAL CHARACTERISTICS**

Refer to additional specifications

RATING	0.5A 50V DC
CIRCUIT	2P2T
CONTACT RESISTANCE	100mΩ MAX.
TIMING	NON-SHORTING
TRAVEL	3mm
OPERATING FORCE	180±80gf
OPERATING LIFE(cycles)	10,000

8																			
7	CONTACT	BRASS STRIP	2	Ag PLATED	WITHIN 1.5mm: ±0.1mm	UNITS	mm												
6	SPRING	STEEL STRIP	2	NATURAL	OVER 1.5mm: ±0.2mm	MAT'L	SEE NOTE												
5	TERMINAL	BRASS STRIP	6	Ag PLATED		FINISH	SEE NOTE												
4	BASE	PHENOLIC RESIN	1	BLACK		SEE NOTE													
3	FRAME	STEEL STRIP	1	NI PLATED		DR:	Rocky 2016/06/24	DWG NO.:	ADL-22F12										
2	KNOB	POM	1	BLACK		CHKD:	Rocky 2016/06/24	SCALE	5/2	SHEET	1/1	REV.	A						
1	PARTS	MATERIAL	Q'TY	FINISHING		APPLD:													

**龙创中业电子（深圳）有限公司**

TITLE: SLIDE SWITCH / HORIZONTAL  
PART NO.: SK-22F12

THESE DRAWINGS AND SPECIFICATIONS ARE THE PROPERTY OF ACCURATE INNOTECH INC. AND SHALL NOT BE REPRODUCED, COPIED OR TRANSMITTED IN ANY FORM OR BY ANY MEANS WITHOUT THE WRITTEN CONSENT OF ACCURATE INNOTECH INC.