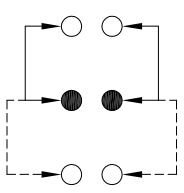
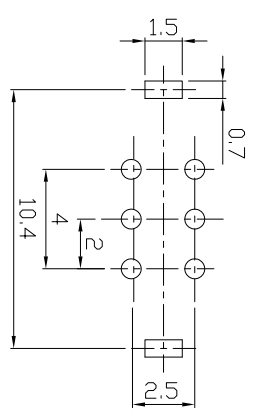
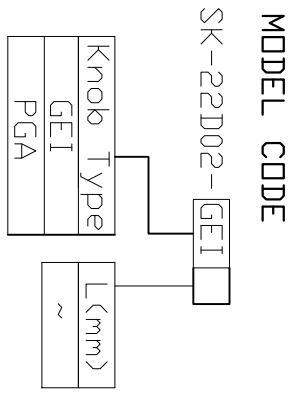
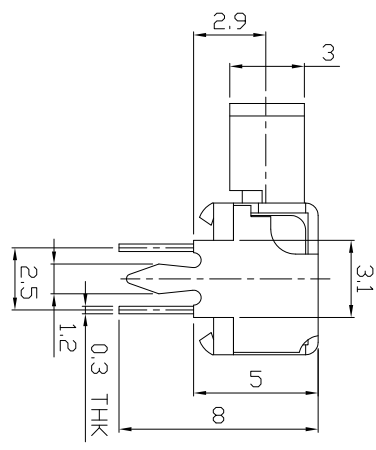
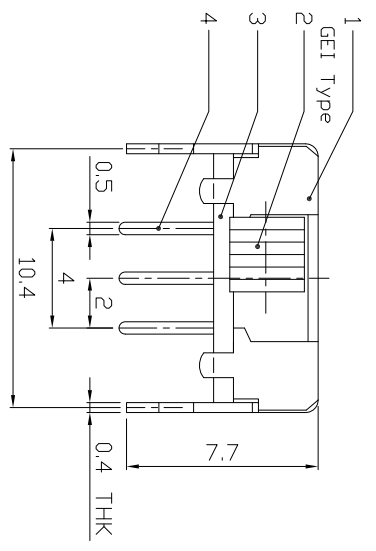
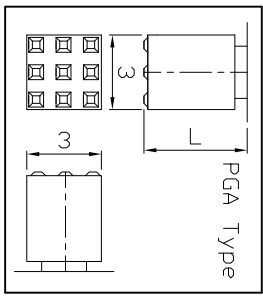
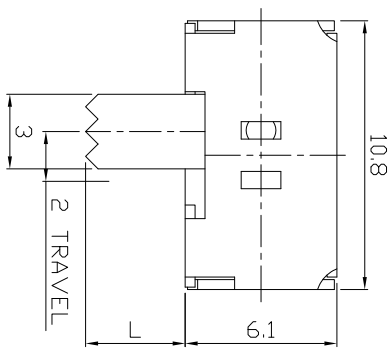




RoHS
Compliant
2002/95/EC

DIMENSIONS



MODEL CODE

SK-22D02-GEI

P.C.B LAYOUT
BOTTOM VIEW

CIRCUIT DIAGRAM

ELECTRO-MECHANICAL CHARACTERISTICS

Refer to additional specifications

RATING	0.3A 50V DC
CIRCUIT	2P2T
CONTACT RESISTANCE	100mΩ MAX.
TIMING	NON-SHORTING
TRAVEL	2mm
OPERATING FORCE	250±100gf
OPERATING LIFE(cycles)	10,000

8																		
7	CONTACT CLIP	PBS STRIP			WITHIN 1.5mm: ±0.1mm	UNITS	mm	<p>龙创中业电子（深圳）有限公司</p> <p>TITLE: SLIDE SWITCH / HORIZONTAL</p> <p>PART NO.: SK-22D02</p> <p>DWG NO.: ADL-22D02</p> <p>SCALE: 1/1</p> <p>REV.:</p>										
6	SPRING PLATE	SUS	2	AG PLATED	OVER 1.5mm: ±0.2mm	MAT'L	SEE NOTE											
5	TERMINAL	BRASS STRIP	1	NATURAL		FINISH	SEE NOTE											
4	BASE	PHENOLIC RESIN	6	AG PLATED		SEE NOTE												
3	KNOB	POM	1	NATURAL		DR:	<i>Rocky</i> 2016/06/24											
2	FRAME	STEEL STRIP	1	BLACK		CHKD:	<i>Rocky</i> 2016/06/24											
1	PARTS	MATERIAL	1	N' PLATED		APPD:												
			1	FINISHING														

THESE DRAWINGS AND SPECIFICATIONS ARE THE PROPERTY OF ACCURATE INNOTECH INC. AND SHALL NOT BE REPRODUCED, COPIED OR TRANSMITTED IN ANY FORM OR BY ANY MEANS WITHOUT THE WRITTEN CONSENT OF ACCURATE INNOTECH INC.

REV.	ECN.	NO.	APPL.