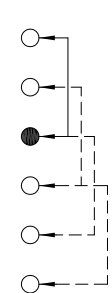
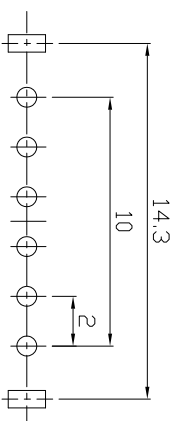
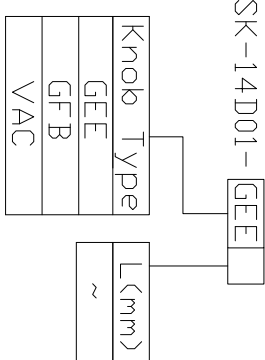
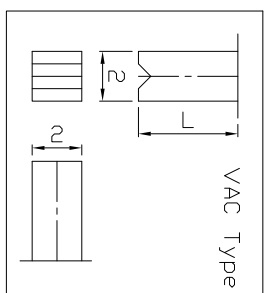
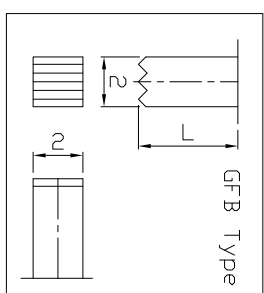
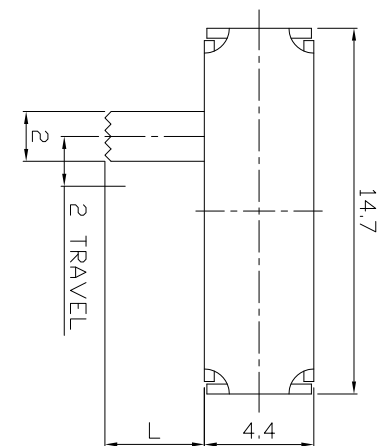


DIMENSIONS



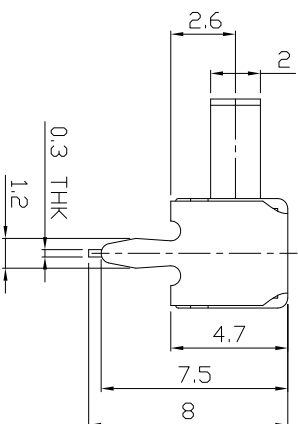
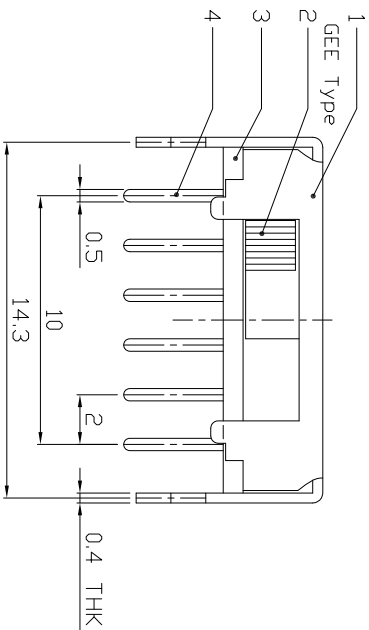
**P.C.B LAYOUT
BOTTOM VIEW**

CIRCUIT DIAGRAM

ELECTRO-MECHANICAL CHARACTERISTICS

Refer to additional specifications

RATING	0.3A 50V DC
CIRCUIT	1P4T
CONTACT RESISTANCE	100mΩ MAX.
TIMING	SHORTING
TRAVEL	2mm
OPERATING FORCE	250±100gf
OPERATING LIFE(cycles)	10,000



龙创中业电子（深圳）有限公司

TITLE:	SLIDE SWITCH / HORIZONTAL	PART NO.:	SK-14D01
DR:	Stacey 2016/06/23	DWG NO.:	ADL-14D01
CHKD:	Stacey 2016/06/23	SCALE	SHEET 4/1
APPD:		REV.	1/1 A

8									
7	SPRING PLATE	PBS STRIP	1	NATURAL	WITHIN 1.5mm: ±0.1mm	UNITS	mm		
6	CONTACT CLIP	PBS STRIP	1	Ag CLAD	OVER 1.5mm: ±0.2mm	MAT'L	SEE NOTE		
5	TERMINAL	BRASS STRIP	6	Ag CLAD		FINISH	SEE NOTE		
4	BASE	PHENOLIC RESIN	1	NATURAL		SEE NOTE			
3	KNOB	POM	1	BLACK		Q'TY			
2	FRAME	STEEL STRIP	1	Ni PLATED		APPD:			
1	PARTS	MATERIAL	Q'TY	FINISHING					

THESE DRAWINGS AND SPECIFICATIONS ARE THE PROPERTY OF ACCURATE INNOTECH INC. AND SHALL NOT BE REPRODUCED, COPIED OR TRANSMITTED IN ANY FORM OR BY ANY MEANS WITHOUT THE WRITTEN CONSENT OF ACCURATE INNOTECH INC.