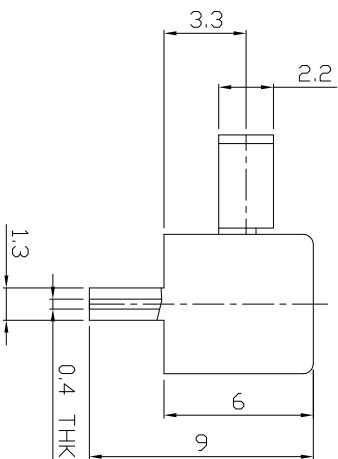
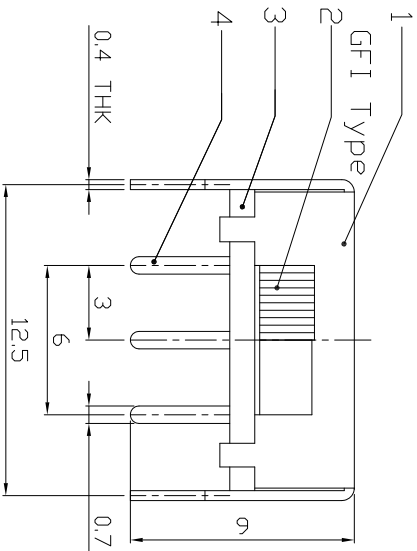
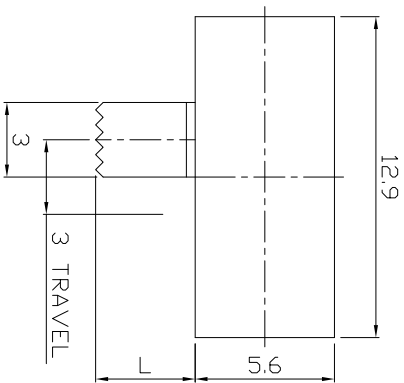




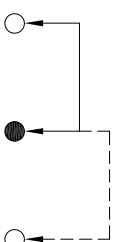
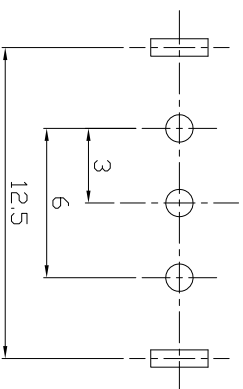
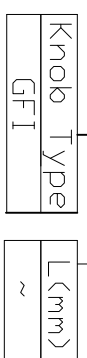
RoHS
Compliant
2002/95/EC

DIMENSIONS



MODEL CODE

SK-12F14-GFI



P.C.B LAYOUT

BOTTOM VIEW

CIRCUIT DIAGRAM

ELECTRO-MECHANICAL CHARACTERISTICS

Refer to additional specifications

RATING	0.5A 50V DC
CIRCUIT	1P2T
CONTACT RESISTANCE	100mΩ MAX.
TIMING	NON-SHORTING
TRAVEL	3mm
OPERATING FORCE	180±80gf
OPERATING LIFE(cycles)	10,000

ND.	PARTS	MATERIAL	Q'TY	FINISHING
8				
7	SPRING	STEEL STRIP	1	NATURAL
6	CONTACT	BRASS STRIP	1	Ag PLATED
5	TERMINAL	BRASS STRIP	3	Ag PLATED
4	BASE	PHENOLIC RESIN	1	NATURAL
3	KNOB	POM	1	BLACK
2	FRAME	STEEL STRIP	1	Ni PLATED
1	PARTS			

WITHIN 1.5mm: ±0.1mm
OVER 1.5mm: ±0.2mm

龙创中业电子（深圳）有限公司

TITLE: SLIDE SWITCH / HORIZONTAL
PART NO.: SK-12F14

DR: Rocky 2016/06/22 DWG NO.: ADL-12F14
CHKD: Rocky 2016/06/22 SCALE SHEET REV.
APPD: 3/1 1/1 A CUSTOMER DRAWING

REV.	ECN.	NO.	APPL.