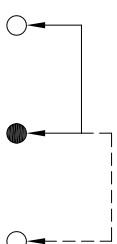
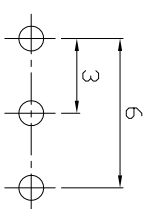
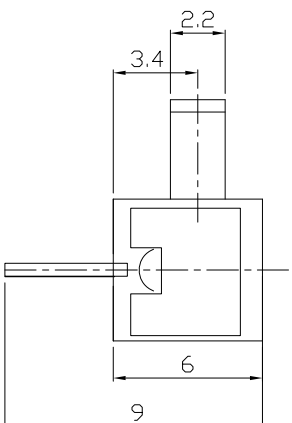
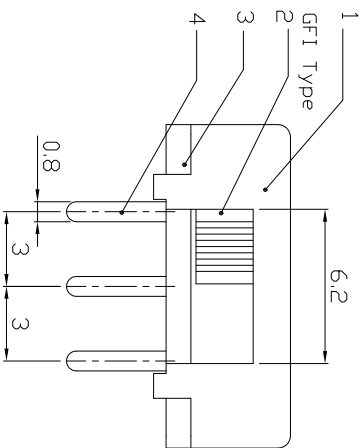
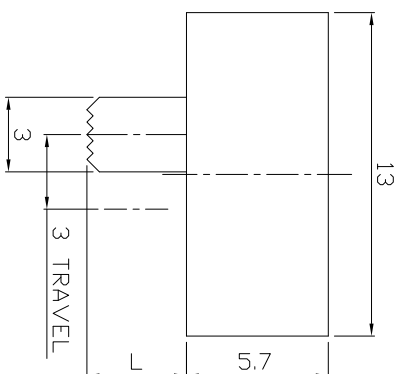


DIMENSIONS



MODEL CODE

SS-12F04-GFI



P.C.B LAYOUT  
BOTTOM VIEW

CIRCUIT DIAGRAM

ELECTRO-MECHANICAL CHARACTERISTICS

Refer to additional specifications

RATING	0.3A 50V DC
CIRCUIT	1P2T
CONTACT RESISTANCE	30mΩ MAX.
TIMING	NON-SHORTING
TRAVEL	3mm
OPERATING FORCE	200±100gf
OPERATING LIFE(cycles)	10,000

8									
7	SPRING	SUS WIRE	1	NATURAL	WITHIN 1.5mm: ±0.1mm	UNITS	mm		
6	CONTACT	BRASS STRIP	1	AG PLATED	OVER 1.5mm: ±0.2mm	MAT'L	SEE NOTE		
4	TERMINAL	BRASS STRIP	1	AG PLATED		FINISH	SEE NOTE		
3	TERMINAL BASE	PHENOLIC RESIN	1	NATURAL		SEE NOTE			
2	KNDB	POM	1	BLACK		Q'TY			
1	COVER	MILD STEEL	1	Ni PLATED		CHK'D:	2016/08/10	DWG NO.:	AZJ-12F04
ND.	PARTS	MATERIAL	Q'TY	FINISHING		APPD:	2016/08/10	SCALE	3/1

THESE DRAWINGS AND SPECIFICATIONS ARE THE PROPERTY OF ACCURATE INNOTECH INC. AND SHALL NOT BE REPRODUCED, COPIED OR TRANSMITTED IN ANY FORM OR BY ANY MEANS WITHOUT THE WRITTEN CONSENT OF ACCURATE INNOTECH INC.

龙创中业电子（深圳）有限公司

TITLE:	SLIDE SWITCH / HORIZONTAL	PART NO.:	SS-12F04
DR:	2016/08/10	DWG NO.:	AZJ-12F04
CHK'D:	2016/08/10	SCALE	3/1
APPD:		SHEET	1/1
		REV.	A
		CUSTOMER DRAWING	

REV.	ECN.	NO.	APPL.