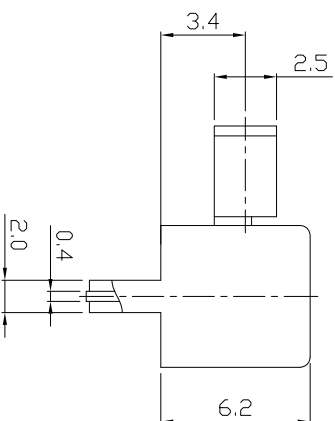
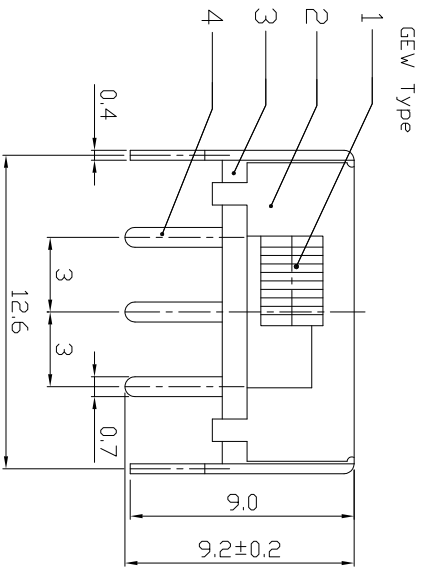
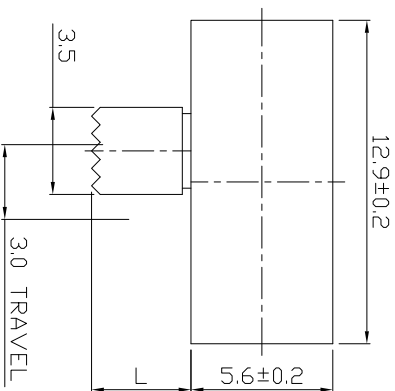




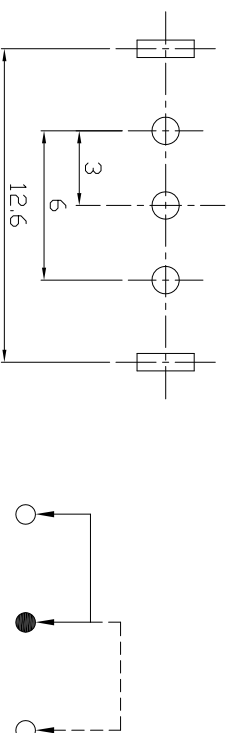
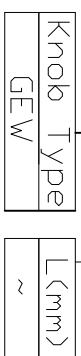
RoHS
Compliant
2002/95/EC

DIMENSIONS



MODEL CODE

SK-12E14 - GEW



**P.C.B LAYOUT
BOTTOM VIEW**

CIRCUIT DIAGRAM

ELECTRO-MECHANICAL CHARACTERISTICS

Refer to additional specifications

RATING	0.5A 50V DC
CIRCUIT	1P2T
CONTACT RESISTANCE	100mΩ MAX.
TIMING	NON-SHORTING
TRAVEL	3mm
OPERATING FORCE	250±80gf
OPERATING LIFE(cycles)	10,000

龙创中业电子（深圳）有限公司

TITLE: SLIDE SWITCH / HORIZONTAL
PART NO.: SK-12E14

DR: <i>Rocky</i> 2016/06/22	DWG NO: ADL-12E14
CHKD: <i>Rocky</i> 2016/06/22	SCALE SHEET REV.
APPD:	3/1 1/1 A
	CUSTOMER DRAWING

8					WITHIN 1.5mm: ±0.1mm	UNITS	mm
7	CONTACT (CLIP)	BRASS STRIP	1		OVER 1.5mm: ±0.2mm	MAT'L	SEE NOTE
6	SPRING	STEEL WIRE	1			FINISH	SEE NOTE
5	TERMINAL	BRASS STRIP	3			SEE NOTE	
4	TERMINAL BASE	PHENOL IC RESIN	1			Q'TY	
3	FRAME	IRON STRIP	1			APPD:	
2	KNDB	POM	1				
1	PARTS	MATERIAL	Q'TY	FINISHING			

THESE DRAWINGS AND SPECIFICATIONS ARE THE PROPERTY OF ACCURATE INNOTECH INC. AND SHALL NOT BE REPRODUCED, COPIED OR TRANSMITTED IN ANY FORM OR BY ANY MEANS WITHOUT THE WRITTEN CONSENT OF ACCURATE INNOTECH INC.

REV.	ECN.	NO.	APPL.