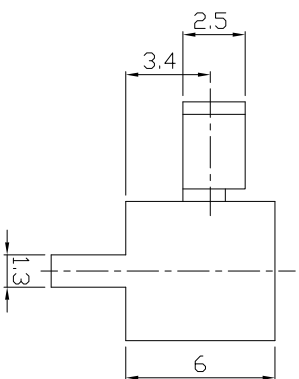
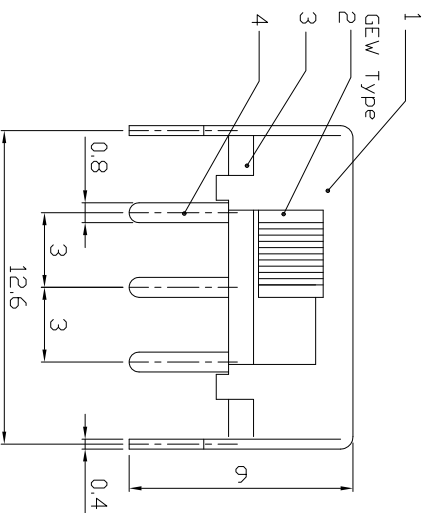
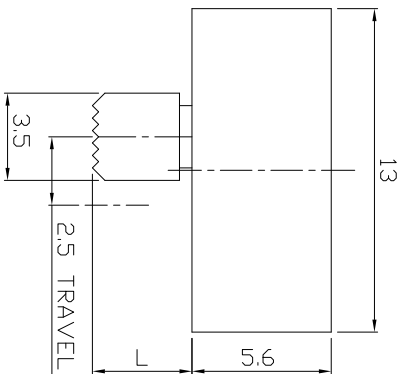
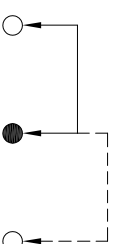
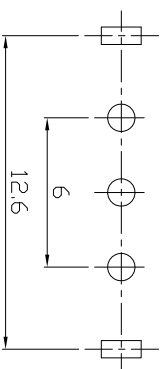


DIMENSIONS



MODEL CODE

SS-12E12-GEW



**P.C.B LAYOUT
BOTTOM VIEW**

CIRCUIT DIAGRAM

ELECTRO-MECHANICAL CHARACTERISTICS

Refer to additional specifications

RATING	0.3A 50V DC
CIRCUIT	1P2T
CONTACT RESISTANCE	30mΩ MAX.
TIMING	NON-SHORTING
TRAVEL	2.5mm
OPERATING FORCE	200±100gf
OPERATING LIFE(cycles)	10,000

8																			
7	SPRING	SUS WIRE	1	NATURAL	WITHIN 1.5mm: ±0.1mm	UNITS	mm												
6	CONTACT	BRASS STRIP	1	AG PLATED	OVER 1.5mm: ±0.2mm	MAT'L	SEE NOTE												
5	TERMINAL	BRASS STRIP	1	AG PLATED		FINISH	SEE NOTE												
4	TERMINAL BASE	PHENOLIC RESIN	1	NATURAL		SEE NOTE													
3	KNDB	PBT	1	BLACK		DR:	Stucky 2016/08/10	DWG NO.:	AZJ-12E12										
2	COVER	MILD STEEL	1	Ni PLATED		CHKD:	Stucky 2016/08/10	SCALE	3:1	SHEET	1/1	REV.	A	CUSTOMER					
1	PARTS	MATERIAL	Q'TY	FINISHING		APPLD:													

龙创中业电子（深圳）有限公司

TITLE: SLIDE SWITCH / HORIZONTAL
PART NO.: SS-12E12

THESE DRAWINGS AND SPECIFICATIONS ARE THE PROPERTY OF ACCURATE INNOTECH INC. AND SHALL NOT BE REPRODUCED, COPIED OR TRANSMITTED IN ANY FORM OR BY ANY MEANS WITHOUT THE WRITTEN CONSENT OF ACCURATE INNOTECH INC.