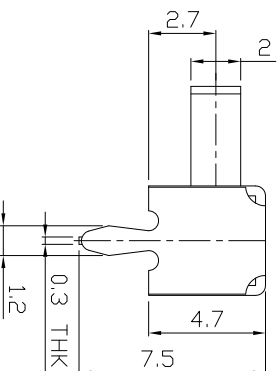
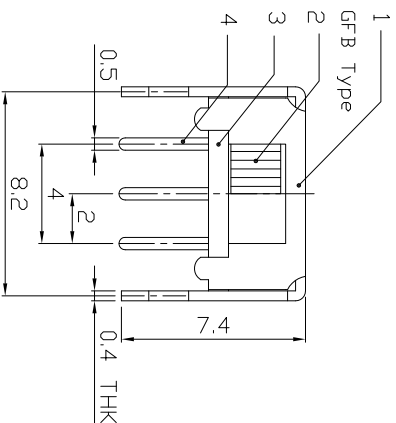
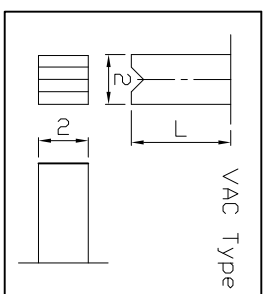
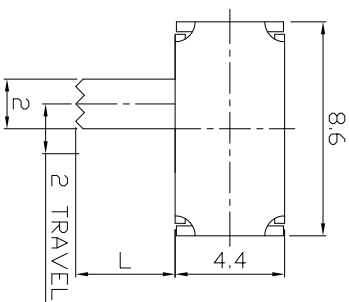




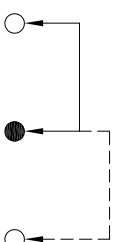
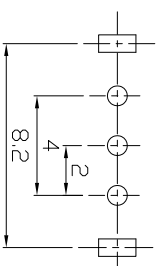
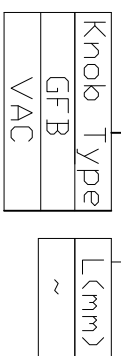
RoHS
Compliant
2002/95/EC

DIMENSIONS



MODEL CODE

SK-12D12- [GFB]



P.C.B LAYOUT
BOTTOM VIEW

CIRCUIT DIAGRAM

ELECTRO-MECHANICAL CHARACTERISTICS

Refer to additional specifications

RATING	0.3A 50V DC
CIRCUIT	1P2T
CONTACT RESISTANCE	100mΩ MAX.
TIMING	SHORTING
TRAVEL	2mm
OPERATING FORCE	250±100gf
OPERATING LIFE(cycles)	10,000

龙创中业电子（深圳）有限公司

8									
7	SPRING PLATE	SUS	1	AG PLATED					
6	CONTACT CLIP	PBS STRIP	1	AG PLATED					
4	TERMINAL	BRASS STRIP	3	AG PLATED					
3	BASE	PHENOLIC RESIN	1	NATURAL					
2	KNOB	POM	1	BLACK					
1	FRAME	STEEL STRIP	1	Ni PLATED					
ND.	PARTS	MATERIAL	Q'TY	FINISHING					

WITHIN 1.5mm: ±0.1mm
OVER 1.5mm: ±0.2mm

UNITS mm
MATERIAL SEE NOTE
FINISH SEE NOTE

TITLE: SLIDE SWITCH / HORIZONTAL
PART NO.: SK-12D12
DWG NO.: ADL-12D12

THESE DRAWINGS AND SPECIFICATIONS ARE THE PROPERTY OF ACCURATE INNOTECH INC. AND SHALL NOT BE REPRODUCED, COPIED OR TRANSMITTED IN ANY FORM OR BY ANY MEANS WITHOUT THE WRITTEN CONSENT OF ACCURATE INNOTECH INC.

Q'TY APP'D:

DR: Ricky 2016/06/21
CHKD: Ricky 2016/06/21
SCALE: 4:1
SHEET: 1/1
REV: A
CUSTOMER DRAWING