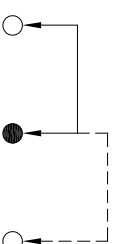
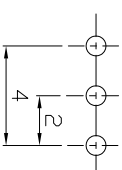
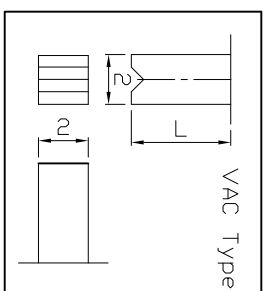
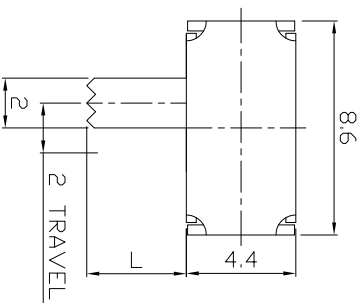




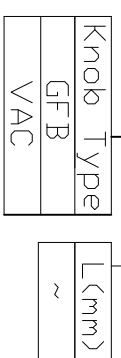
**RoHS**  
Compliant  
2002/95/EC

**DIMENSIONS**



**MODEL CODE**

SK-12D09-GFB



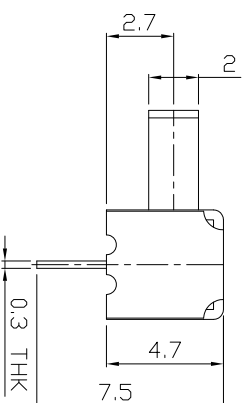
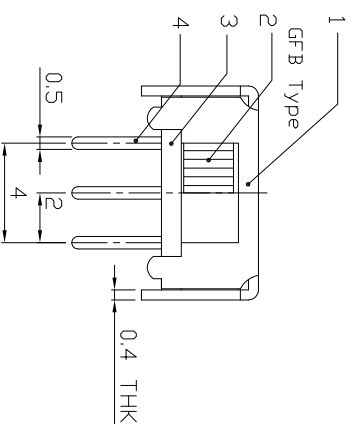
**P.C.B LAYOUT**  
**BOTTOM VIEW**

**CIRCUIT DIAGRAM**

**ELECTRO-MECHANICAL CHARACTERISTICS**

Refer to additional specifications

RATING	0.3A 50V DC
CIRCUIT	1P2T
CONTACT RESISTANCE	100mΩ MAX.
TIMING	NON-SHORTING
TRAVEL	2mm
OPERATING FORCE	250±100gf
OPERATING LIFE(cycles)	10,000



WITHIN 1.5mm: ±0.1mm  
OVER 1.5mm: ±0.2mm

**龙创中业电子（深圳）有限公司**

8																			
7	SPRING PLATE	SUS	1	AG PLATED															
6	CONTACT CLIP	PBS STRIP	1	AG PLATED															
5	TERMINAL	BRASS STRIP	3	AG PLATED															
4	BASE	PHENOLIC RESIN	1	NATURAL															
3	KNOB	POM	1	BLACK															
2	FRAME	STEEL STRIP	1	Ni PLATED															
1	PARTS	MATERIAL	Q'TY	FINISHING															

UNITS mm  
MATERIAL SEE NOTE  
FINISH SEE NOTE  
DR: 2016/06/21  
CHKD: 2016/06/21  
APPD: 2016/06/21

TITLE: SLIDE SWITCH / HORIZONTAL  
PART NO.: SK-12D09  
DWG NO.: ADL-12D09  
SCALE: 4:1  
SHEET: 1/1  
REV: A  
CUSTOMER DRAWING

REV.	ECN.	NO.	APPL.