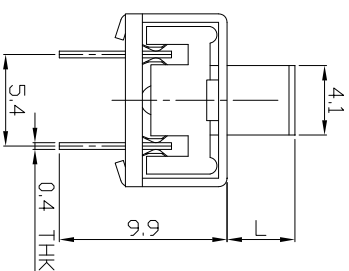
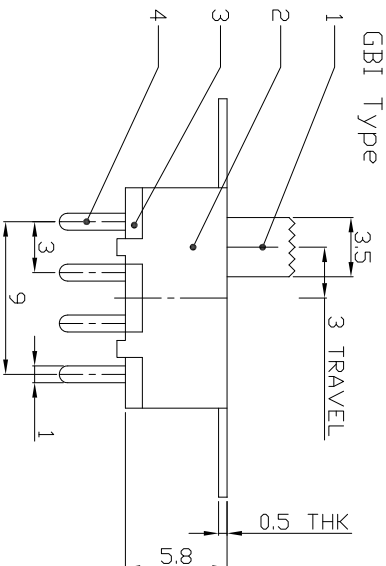
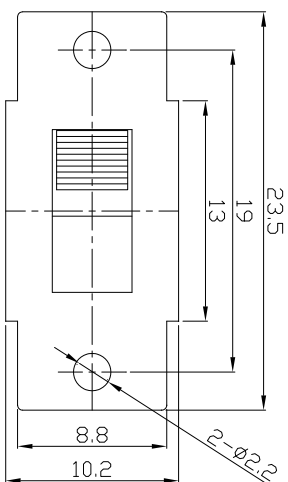
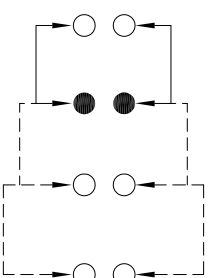
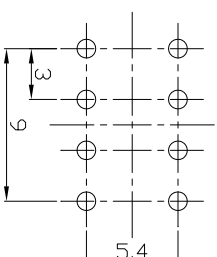


DIMENSIONS



MODEL CODE

SS-23F24-GBI



P.C.B LAYOUT

BOTTOM VIEW

CIRCUIT DIAGRAM

ELECTRO-MECHANICAL CHARACTERISTICS

Refer to additional specifications

RATING	0.5A 50V DC
CIRCUIT	2P3T
CONTACT RESISTANCE	100mΩ MAX.
TIMING	NON-SHORTING
TRAVEL	3mm
OPERATING FORCE	250±100gf
OPERATING LIFE(cycles)	10,000

龙创中业电子（深圳）有限公司

TITLE: SLIDE SWITCH / VERTICAL

PART NO.: SS-23F24

DR: Ricky 2015/10/08 DWG NO: ADL-23F24

CHKD: Ricky 2015/10/08 SCALE SHEET REV. 1/1 A CUSTOMER DRAWING

8	STEEL BALL	STEEL	1	NATURAL	WITHIN 1.5mm: ±0.1mm	UNITS	mm
7	SPRING	STEEL WIRE	1	NATURAL	OVER 1.5mm: ±0.2mm	MAT'L	SEE NOTE
6	CONTACT CLIP	PBS STRIP	2	Ag PLATED		FINISH	SEE NOTE
5	CONTACT CLIP	PBS STRIP	2	Ag PLATED		FINISH	SEE NOTE
4	TERMINAL	BRASS STRIP	8	Ag PLATED		FINISH	SEE NOTE
3	BASE	PHENOLIC RESIN	1	NATURAL		FINISH	SEE NOTE
2	FRAME	STEEL STRIP	1	Ni PLATED		Q'TY	1
1	KNDB	POM	1	BLACK		APP'D:	3/1
ND.	PARTS	MATERIAL	Q'TY	FINISHING			

THESE DRAWINGS AND SPECIFICATIONS ARE THE PROPERTY OF ACCURATE INNOTECH INC. AND SHALL NOT BE REPRODUCED, COPIED OR TRANSMITTED IN ANY FORM OR BY ANY MEANS WITHOUT THE WRITTEN CONSENT OF ACCURATE INNOTECH INC.							
1	2	3	4	5	6	7	

REV.	ECN.	NO.	APPL.