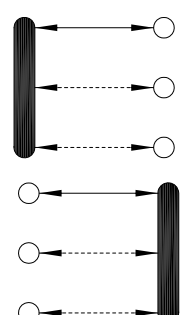
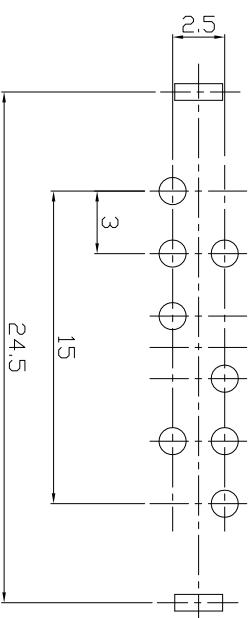
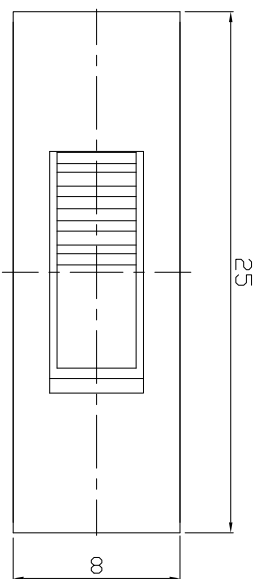
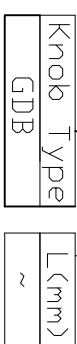


DIMENSIONS



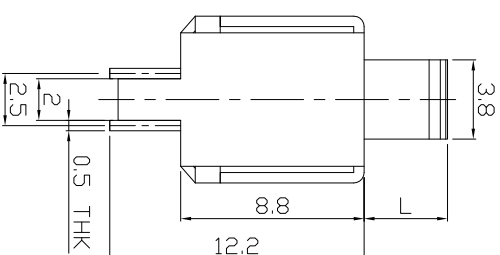
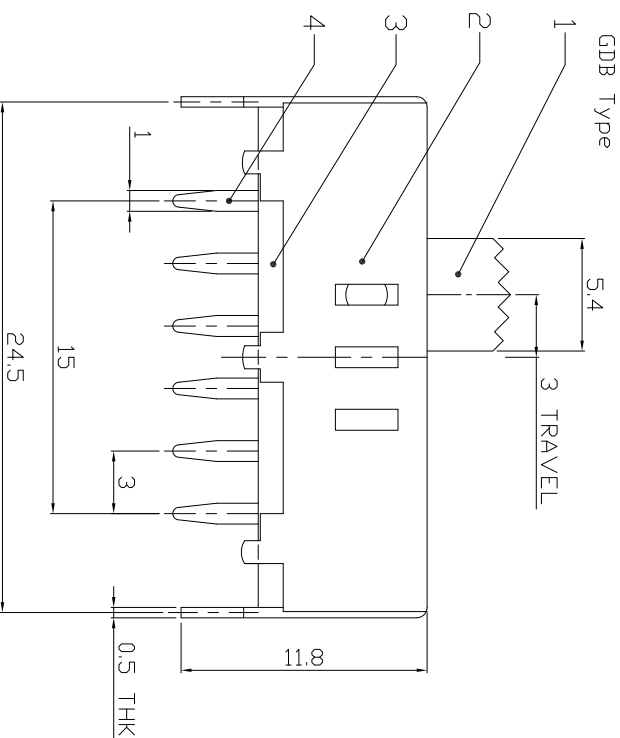
MODEL CODE

SS-23F07-GDB



P.C.B LAYOUT
BOTTOM VIEW

CIRCUIT DIAGRAM



ELECTRO-MECHANICAL CHARACTERISTICS

Refer to additional specifications

RATING	15A 250V AC
CIRCUIT	2P3T
CONTACT RESISTANCE	100mΩ MAX.
TIMING	SHORTING
TRAVEL	3mm
OPERATING FORCE	450±150gf
OPERATING LIFE(cycles)	10,000

龙创中业电子（深圳）有限公司

TITLE: SLIDE SWITCH / VERTICAL
PART NO.: SS-23F07

DR: *Rocky* 2015/10/07 DWG NO.: ADL-23F07
CHKD: *Rocky* 2015/10/07 SCALE SHEET REV.
APPD: 5/2 1/1 A CUSTOMER DRAWING

8	STEEL BALL	STEEL	2	NATURAL	WITHIN 1.5mm: ±0.1mm	UNITS	mm
7	SPRING	STEEL WIRE	3	NATURAL	OVER 1.5mm: ±0.2mm	MAT'L	SEE NOTE
6	CONTACT	BRASS STRIP	2	Ag PLATED		FINISH	SEE NOTE
5	TERMINAL	BRASS STRIP	8	Ag PLATED		SEE NOTE	
4	BASE	PHENOLIC RESIN	1	NATURAL		Q'TY	
3	FRAME	STEEL STRIP	1	BLACK		APPD:	
2	KNOB	POM	1	BLACK			
1	PARTS	MATERIAL	Q'TY	FINISHING			

THESE DRAWINGS AND SPECIFICATIONS ARE THE PROPERTY OF ACCURATE INNOTECH INC. AND SHALL NOT BE REPRODUCED, COPIED OR OTHERWISE TRANSMITTED IN ANY FORM OR BY ANY MEANS WITHOUT THE WRITTEN CONSENT OF ACCURATE INNOTECH INC.

REV.	ECN.	NO.	APPL.