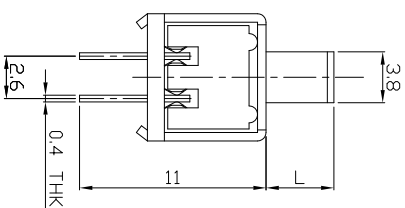
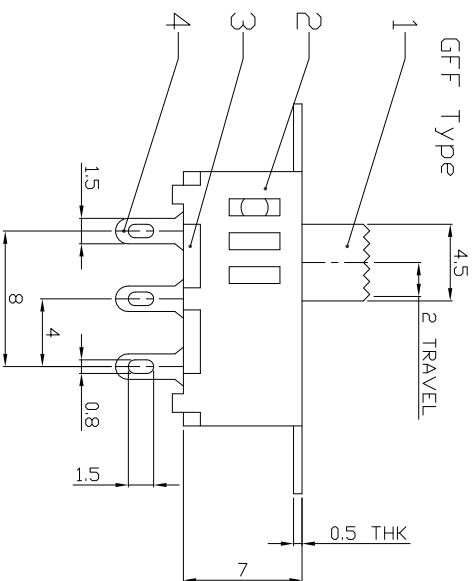
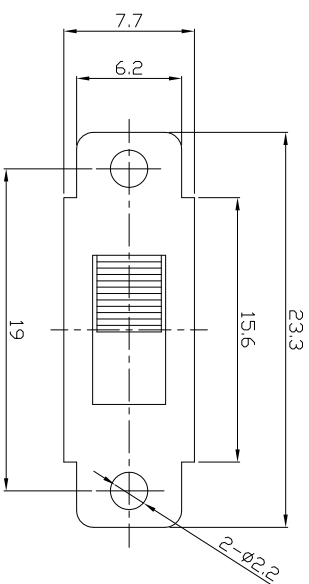




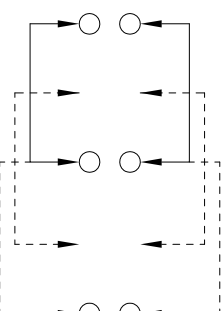
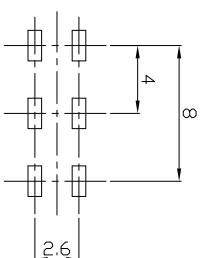
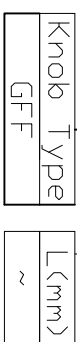
RoHS
Compliant
2002/95/EC

DIMENSIONS



MODEL CODE

SS-23D32-GFF



P.C.B LAYOUT
BOTTOM VIEW

CIRCUIT DIAGRAM

ELECTRO-MECHANICAL CHARACTERISTICS
Refer to additional specifications

RATING	0.3A 50V DC
CIRCUIT	2P3T
CONTACT RESISTANCE	30mΩ MAX.
TIMING	NON-SHORTING
TRAVEL	2mm
OPERATING FORCE	250±100gf
OPERATING LIFE(cycles)	10,000

龙创中业电子（深圳）有限公司

TITLE: SLIDE SWITCH / VERTICAL
PART NO.: SS-23D32

DR: *Rocky* 2015/09/07 DWG NO.: ADL-23D32

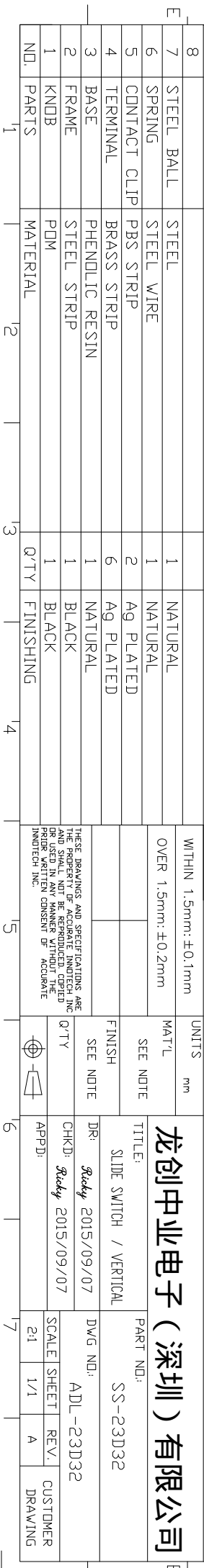
CHKD: *Rocky* 2015/09/07 SCALE SHEET REV. 1/1 A CUSTOMER DRAWING

NO.	PARTS	MATERIAL	Q'TY	FINISHING
8	STEEL BALL	STEEL	1	NATURAL
7	SPRING	STEEL WIRE	1	NATURAL
6	CONTACT CLIP	PBS STRIP	2	AG PLATED
5	CONTACT CLIP	PBS STRIP	2	AG PLATED
4	TERMINAL	BRASS STRIP	6	AG PLATED
3	BASE	PHENOLIC RESIN	1	NATURAL
2	FRAME	STEEL STRIP	1	BLACK
1	KNDB	POM	1	BLACK
ND.	PARTS	MATERIAL	Q'TY	FINISHING

WITHIN 1.5mm: ±0.1mm
OVER 1.5mm: ±0.2mm

UNITS mm
MATERIAL SEE NOTE
FINISH SEE NOTE

THESE DRAWINGS AND SPECIFICATIONS ARE THE PROPERTY OF ACCURATE INNOTECH INC. AND SHALL NOT BE REPRODUCED, COPIED OR TRANSMITTED IN ANY FORM OR BY ANY MEANS WITHOUT THE WRITTEN CONSENT OF ACCURATE INNOTECH INC.



REV.	ECN.	NO.	APPL.