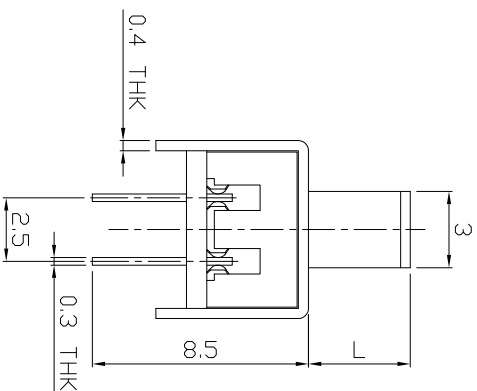
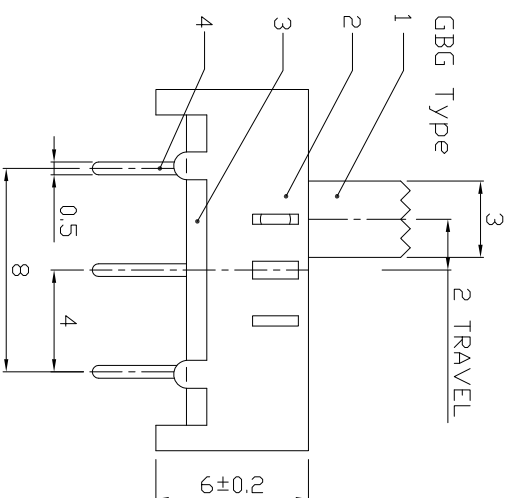
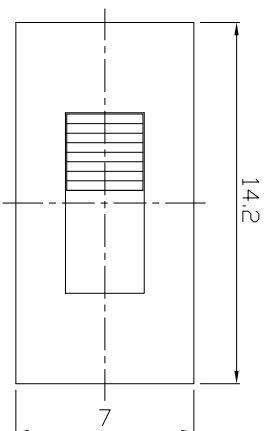


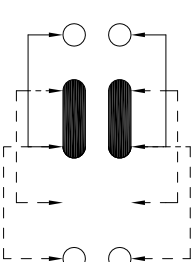
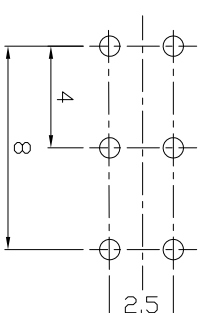
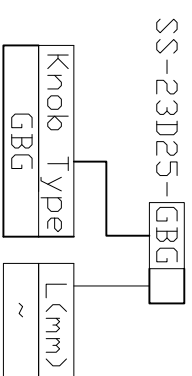


**RoHS**  
Compliant  
2002/95/EC

**DIMENSIONS**



**MODEL CODE**



**P.C.B LAYOUT  
BOTTOM VIEW**

**CIRCUIT DIAGRAM**

**ELECTRO-MECHANICAL CHARACTERISTICS**  
Refer to additional specifications

RATING	0.3A 50V DC
CIRCUIT	2P3T
CONTACT RESISTANCE	100mΩ MAX.
TIMING	NON-SHORTING
TRAVEL	2mm
OPERATING FORCE	250±100gf
OPERATING LIFE(cycles)	10,000

8									
7	SPRING WIRE	PBS STRIP	2	NATURAL					
6	CONTACT CLIP	PBS STRIP	2	Ag PLATED					
4	TERMINAL	BRASS STRIP	6	Ag PLATED					
3	BASE	PHENOLIC RESIN	1	NATURAL					
2	FRAME	STEEL STRIP	1	Ni PLATED					
1	KNDB	POM	1	BLACK					
ND.	PARTS	MATERIAL	Q'TY	FINISHING					

WITHIN 1.5mm: ±0.1mm  
OVER 1.5mm: ±0.2mm

THESE DRAWINGS AND SPECIFICATIONS ARE THE PROPERTY OF ACCURATE INNOTECH INC. AND SHALL NOT BE REPRODUCED, COPIED OR OTHERWISE TRANSMITTED IN ANY FORM OR BY ANY MEANS WITHOUT THE WRITTEN CONSENT OF ACCURATE INNOTECH INC.

**龙创中业电子（深圳）有限公司**

TITLE: SLIDE SWITCH / VERTICAL  
PART NO.: SS-23D25

DR: *Rocky* 2015/09/07 DWG NO.: ADL-23D25  
CHKD: *Rocky* 2015/09/07 SCALE SHEET REV. 4/1 1/1 A CUSTOMER DRAWING  
APPD:

REV.	ECN.	NO.	APPL.