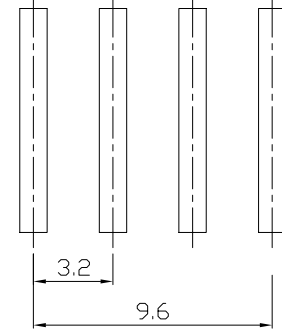
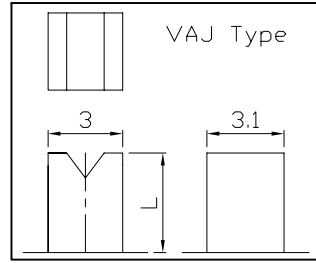
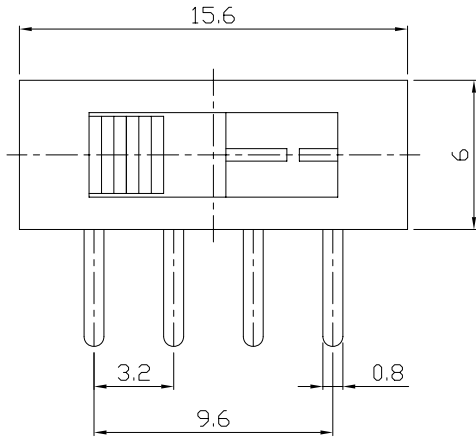




RoHS
Compliant
2002/95/EC

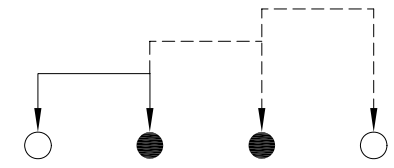
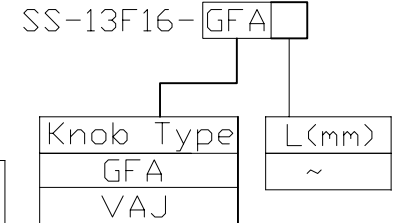
REV.	ECN. NO.	NO.	APPD.

DIMENSIONS

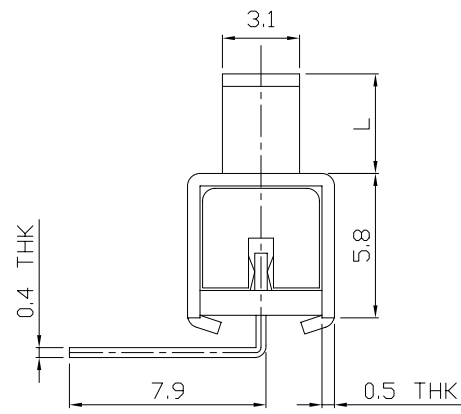
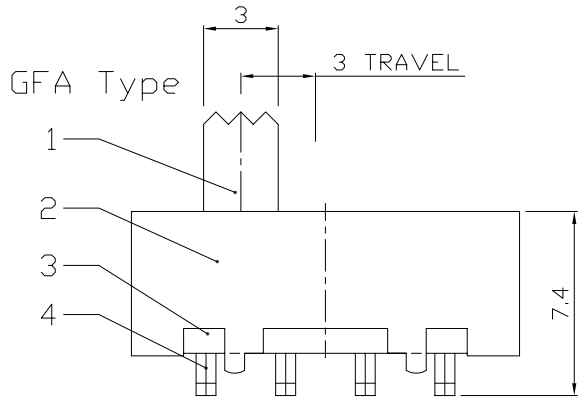


P.C.B LAYOUT
BOTTOM VIEW

MODEL CODE



CIRCUIT DIAGRAM



ELECTRO-MECHANICAL CHARACTERISTICS

Refer to additional specifications

RATING	0.5A 50V DC
CIRCUIT	1P3T
CONTACT RESISTANCE	100mΩ MAX.
TIMING	NON-SHORTING
TRAVEL	3mm
OPERATING FORCE	250±100gf
OPERATING LIFE(cycles)	10,000

8					WITHIN 1.5mm: ±0.1mm	UNITS	mm
7	STEEL BALL	STEEL	1	Ag PLATED	OVER 1.5mm: ±0.2mm	MAT'L	
6	SPRING	STEEL WIRE	1	NATURAL		SEE NOTE	
5	CONTACT CLIP	PBS C5210R-EH	1	Ag CLAD		FINISH	
4	TERMINAL	BRASS STRIP	4	Ag PLATED		SEE NOTE	
3	BASE	PHENOLIC RESIN	1	NATURAL		Q'TY	
2	FRAME	STEEL STRIP	1	Ni PLATED			
1	KNOB	POM	1	BLACK			
NO.	PARTS	MATERIAL	Q'TY	FINISHING			

THESE DRAWINGS AND SPECIFICATIONS ARE THE PROPERTY OF ACCURATE INNOTECH INC AND SHALL NOT BE REPRODUCED, COPIED OR USED IN ANY MANNER WITHOUT THE PRIOR WRITTEN CONSENT OF ACCURATE INNOTECH INC.

龙创中业电子(深圳)有限公司

TITLE: SLIDE SWITCH / VERTICAL PART NO.: SS-13F16

DR: *Ricky* 2015/07/14 DWG NO.: ADL-13F16

CHKD: *Ricky* 2015/07/14

APPD: _____

SCALE	SHEET	REV.	CUSTOMER DRAWING
3:1	1/1	A	