



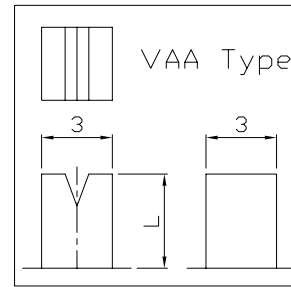
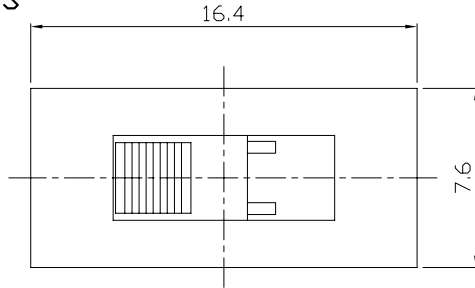
RoHS
Compliant
2002/95/EC

MODEL CODE

SS-12L04-GBG

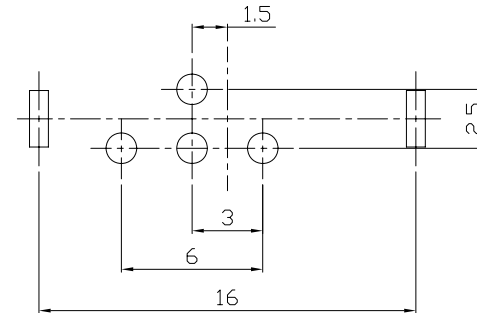
REV.	ECN.	NO.	APPD.

DIMENSIONS

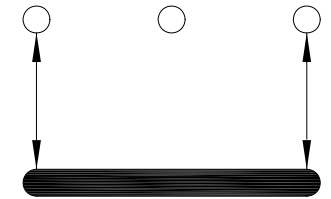


Knob Type
GBG
VAA

L(mm)
~



P.C.B LAYOUT
BOTTOM VIEW

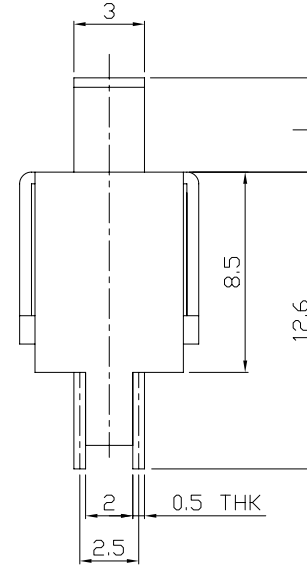
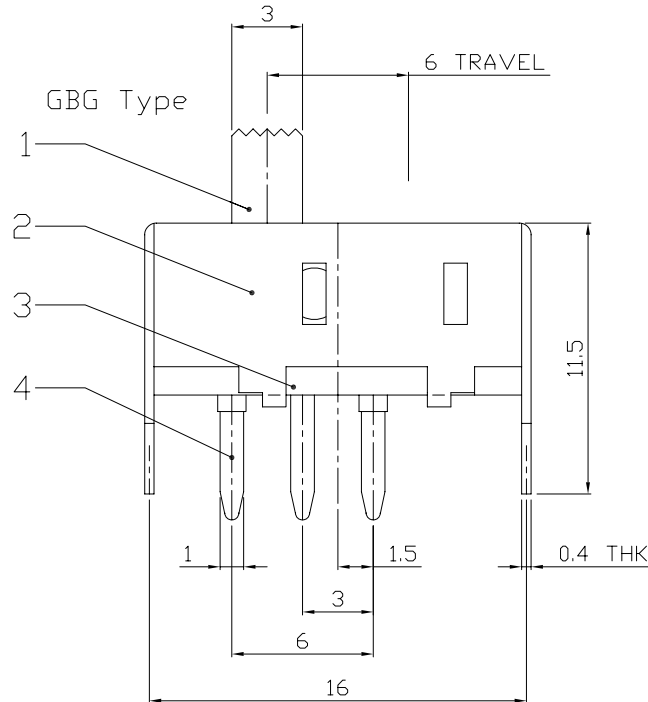


CIRCUIT DIAGRAM

ELECTRO-MECHANICAL CHARACTERISTICS

Refer to additional specifications

RATING	0.5A 50V DC
CIRCUIT	1P2T
CONTACT RESISTANCE	100mΩ MAX.
TIMING	NON-SHORTING
TRAVEL	6mm
OPERATING FORCE	250±100gf
OPERATING LIFE(cycles)	10,000



WITHIN 1.5mm: ±0.1mm

OVER 1.5mm: ±0.2mm

UNITS	mm
MAT'L	SEE NOTE
FINISH	SEE NOTE
Q'TY	SEE NOTE

THESE DRAWINGS AND SPECIFICATIONS ARE THE PROPERTY OF ACCURATE INNOTECH INC AND SHALL NOT BE REPRODUCED, COPIED OR USED IN ANY MANNER WITHOUT THE PRIOR WRITTEN CONSENT OF ACCURATE INNOTECH INC.

龙创中业电子(深圳)有限公司

TITLE:	SLIDE SWITCH / VERTICAL	PART NO.:	SS-12L04
DR:	Ricky 2015/07/13	DWG NO.:	ADL-12L04
CHKD:	Ricky 2015/07/13	SCALE	SHEET
APPD:		5/2	1/1
		REV.	A
		CUSTOMER	DRAWING

NO.	PARTS	MATERIAL	Q'TY	FINISHING
8				
7	STEEL BALL	STEEL	2	NATURAL
6	SPRING	STEEL WIRE	2	NATURAL
5	CONTACT	BRASS STRIP	1	Ag PLATED
4	TERMINAL	BRASS STRIP	4	Ag PLATED
3	BASE	PHENOLIC RESIN	1	BLACK
2	FRAME	STEEL STRIP	1	Ni PLATED
1	KNOB	POM	1	BLACK