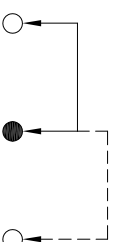
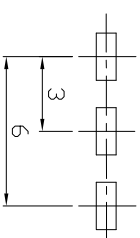
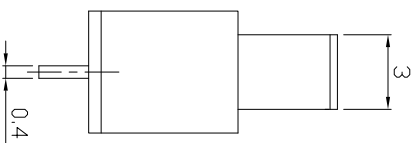
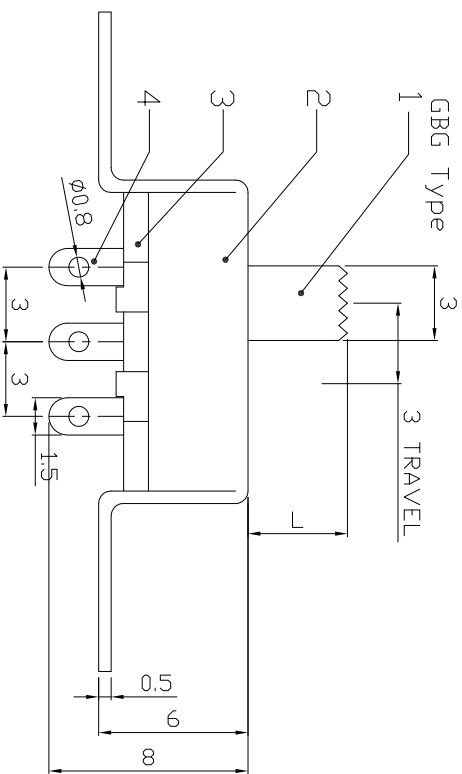
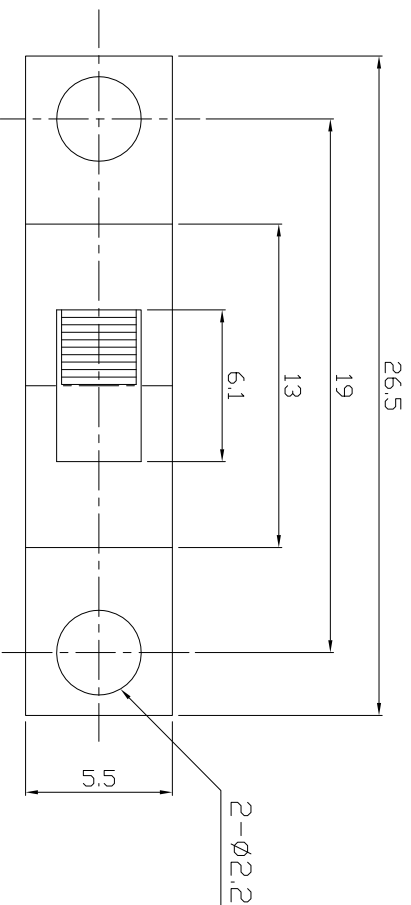
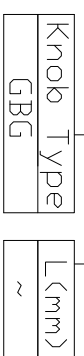


**DIMENSIONS**



**MODEL CODE**

SS-12F89-GBG



**P.C.B LAYOUT  
BOTTOM VIEW**

**CIRCUIT DIAGRAM**

**ELECTRO-MECHANICAL CHARACTERISTICS**

Refer to additional specifications

RATING	0.5A 50V DC
CIRCUIT	1P2T
CONTACT RESISTANCE	30mΩ MAX.
TIMING	NON-SHORTING
TRAVEL	3mm
OPERATING FORCE	200±100gf
OPERATING LIFE(cycles)	10,000

8																			
7	SPRING	SUS WIRE	1	NATURAL	WITHIN 1.5mm: ±0.1mm	UNITS	mm												
6	CONTACT	BRASS	1	AG PLATED	OVER 1.5mm: ±0.2mm	MAT'L	SEE NOTE												
5	TERMINAL	BRASS STRIP	1	AG PLATED		FINISH	SEE NOTE												
4	TERMINAL CASE	PHENOLIC RESIN	1	NATURAL		SEE NOTE													
3	COVER	MILD STEEL	1	NI PLATED		DR:	2016/08/05	DWG NO.:	AZJ-12F89										
2	KNDB	POM	1	BLACK		CHKD:	2016/08/05	SCALE	1/1	REV.	A								
1	PARTS	MATERIAL	Q'TY	FINISHING		APPD:		SCALE	1/1	REV.	A								
ND.																			

龙创中业电子（深圳）有限公司

TITLE: SLIDE SWITCH / VERTICAL  
PART NO.: SS-12F89

DR: 2016/08/05  
CHKD: 2016/08/05  
APPD:

SCALE: 1/1  
REV: A  
CUSTOMER DRAWING