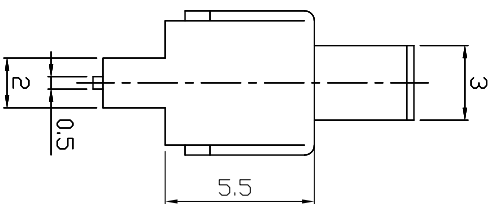
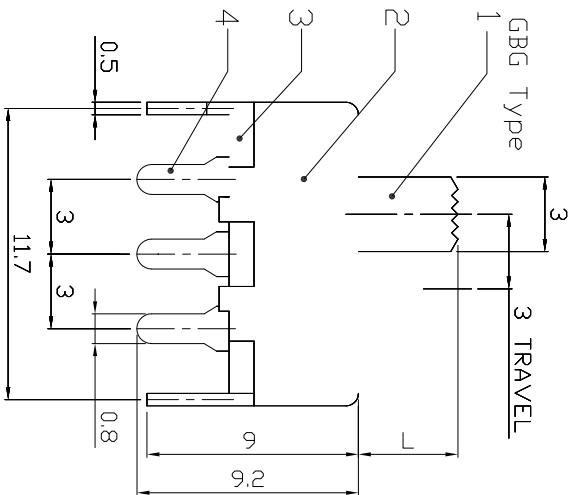
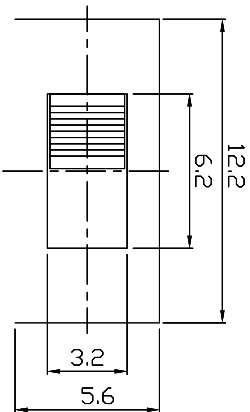




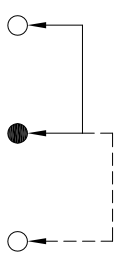
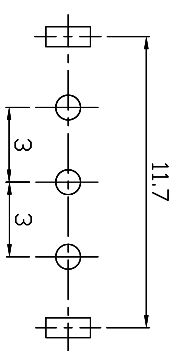
RoHS
Compliant
2002/95/EC

DIMENSIONS



MODEL CODE

SS-12F45-GBG



P.C.B LAYOUT BOTTOM VIEW

CIRCUIT DIAGRAM

ELECTRO-MECHANICAL CHARACTERISTICS

Refer to additional specifications

RATING	0.5A 50V DC
CIRCUIT	1P2T
CONTACT RESISTANCE	30mΩ MAX.
TIMING	NON-SHORTING
TRAVEL	3mm
OPERATING FORCE	200±100gf
OPERATING LIFE(cycles)	10,000

龙创中业电子（深圳）有限公司

8					
7					
6	SPRING	SUS WIRE	1	NATURAL	
5	CONTACT	BRASS	1	Ag PLATED	
4	TERMINAL	BRASS STRIP	1	Ag PLATED	
3	TERMINAL CASE	PHENOLIC RESIN	1	NATURAL	
2	COVER	MILD STEEL	1	Ni PLATED	
1	KNDB	POM	1	BLACK	
ND.	PARTS	MATERIAL	Q'TY	FINISHING	

WITHIN 1.5mm: ±0.1mm
OVER 1.5mm: ±0.2mm

UNITS	mm
MAT'L	SEE NOTE
FINISH	SEE NOTE
Q'TY	
APPD:	

TITLE: 龙创中业电子（深圳）有限公司
SLIDE SWITCH / VERTICAL

PART NO.: SS-12F45

DR: 2016/08/05

CHKD: 2016/08/05

SCALE: 1/1

DWG NO.: AZJ-12F45

CUSTOMER DRAWING

1 2 3 4 5 6 7

REV.	ECN.	NO.	APPL.