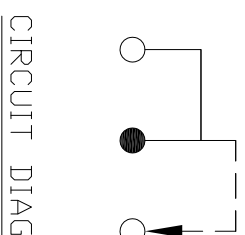
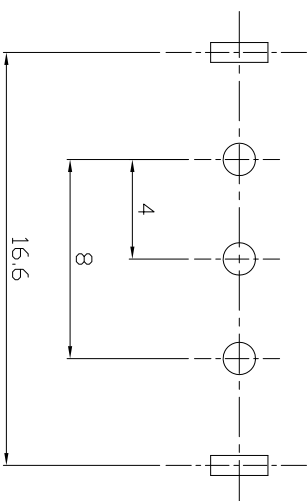
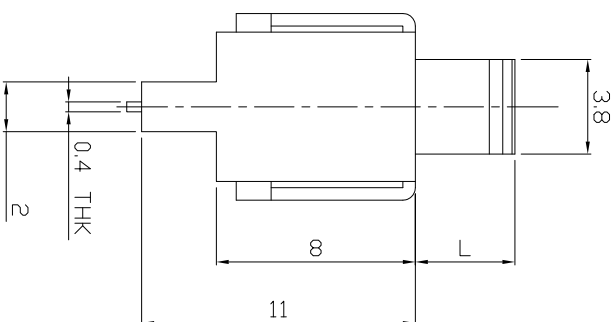
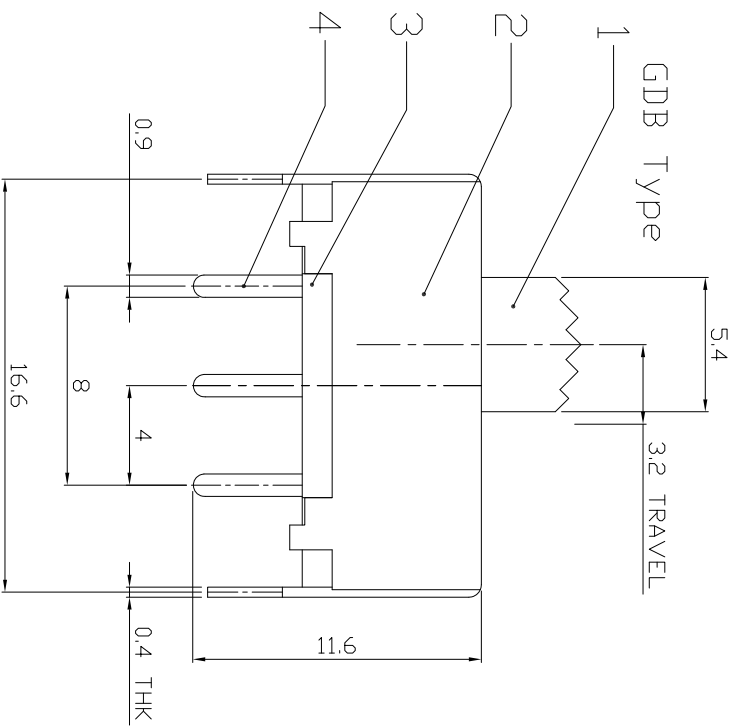
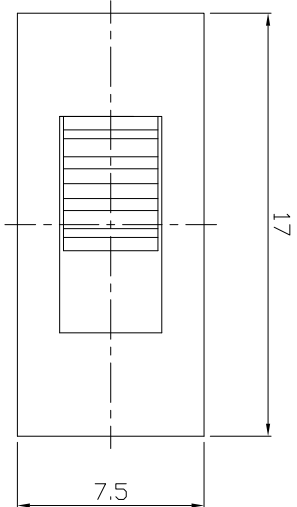




RoHS
Compliant
2002/95/EC

DIMENSIONS



MODEL CODE

SS-12F03-GDB



P.C.B. LAYOUT
BOTTOM VIEW

CIRCUIT DIAGRAM

ELECTRO-MECHANICAL CHARACTERISTICS

Refer to additional specifications

RATING	0.5A 50V DC
CIRCUIT	1P2T
CONTACT RESISTANCE	100mΩ MAX.
TIMING	NON-SHORTING
TRAVEL	3.2mm
OPERATING FORCE	180±80gf
OPERATING LIFE(cycles)	10,000

8																			
7	SPRING	STEEL WIRE	1	NATURAL	WITHIN 1.5mm: ±0.1mm	UNITS	mm												
6	CONTACT	BRASS STRIP	1	Ag PLATED	OVER 1.5mm: ±0.2mm	MAT'L	SEE NOTE												
5	TERMINAL	BRASS STRIP	3	Ag PLATED		FINISH	SEE NOTE												
4	BASE	PHENOLIC RESIN	1	NATURAL		SEE NOTE													
3	FRAME	STEEL STRIP	1	Ni PLATED		DR:	Rocky 2015/07/07	DWG NO.:	ADL-12F03										
2	KNDB	POM	1	BLACK		CHKD:	Rocky 2015/07/07	SCALE	SHEET	REV.									
1	PARTS	MATERIAL	Q'TY	FINISHING		APPD:		SCALE	1/1	REV.	A								

龙创中业电子（深圳）有限公司

TITLE: SLIDE SWITCH / VERTICAL
PART NO.: SS-12F03

THESE DRAWINGS AND SPECIFICATIONS ARE THE PROPERTY OF ACCURATE INNOTECH INC. AND SHALL NOT BE REPRODUCED, COPIED OR OTHERWISE TRANSMITTED IN ANY FORM OR BY ANY MEANS WITHOUT THE WRITTEN CONSENT OF ACCURATE INNOTECH INC.

REV.	ECN.	NO.	APPL.