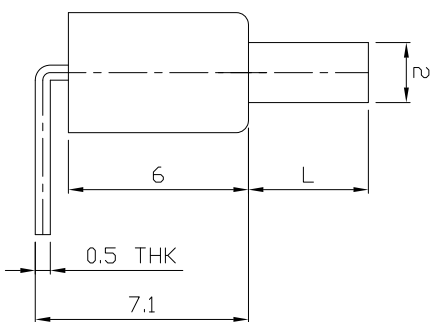
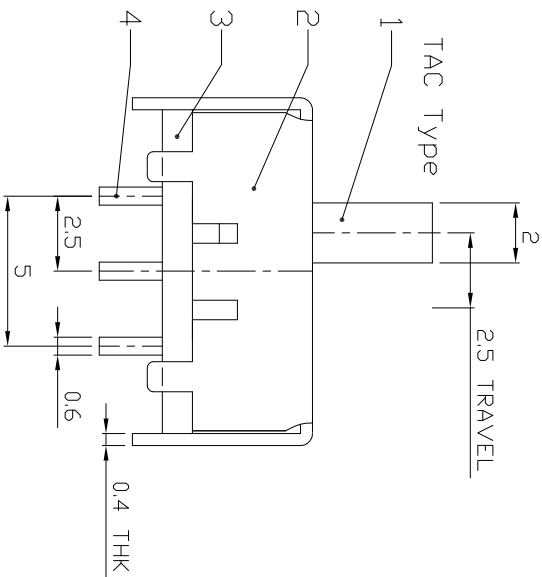
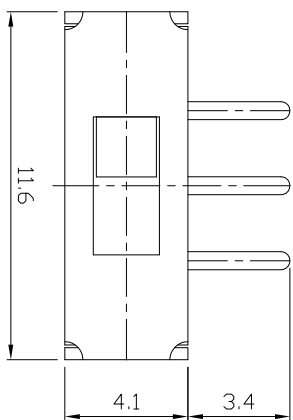
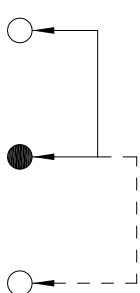
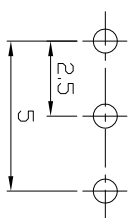


DIMENSIONS



MODEL CODE

SS-12E21-TAC



P.C.B LAYOUT

BOTTOM VIEW

CIRCUIT DIAGRAM

ELECTRO-MECHANICAL CHARACTERISTICS

Refer to additional specifications

RATING	0.3A 50V DC
CIRCUIT	1P2T
CONTACT RESISTANCE	100mΩ MAX.
TIMING	NON-SHORTING
TRAVEL	2.5mm
OPERATING FORCE	250±100gf
OPERATING LIFE(cycles)	10,000

8																			
7																			
6																			
5	CONTACT CLIP	PBS STRIP	1	Ag PLATED															
4	TERMINAL	BRASS STRIP	3	Ag PLATED															
3	BASE	PHENOLIC RESIN	1	NATURAL															
2	FRAME	STEEL STRIP	1	Ni PLATED															
1	KNDB	POM	1	WHITE															
ND.	PARTS	MATERIAL	Q'TY	FINISHING															

龙创中业电子（深圳）有限公司

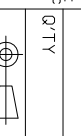
TITLE: SLIDE SWITCH / VERTICAL
PART NO.: SS-12E21

DR: Ricky 2015/07/07
CHKD: Ricky 2015/07/07
SCALE: 4:1

REV. ECN. NO. APPD.
REV. 1/1 A CUSTOMER DRAWING

WITHIN 1.5mm: ±0.1mm
OVER 1.5mm: ±0.2mm

UNITS: mm
MATERIAL: SEE NOTE
FINISH: SEE NOTE
Q'TY: APPD.



DWG NO.: ADL-12E21