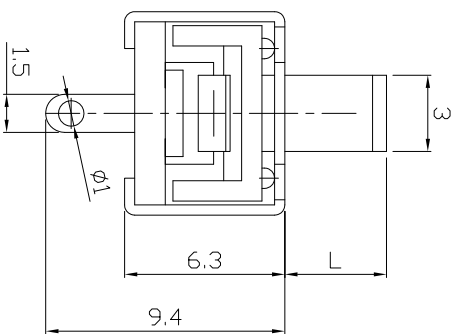
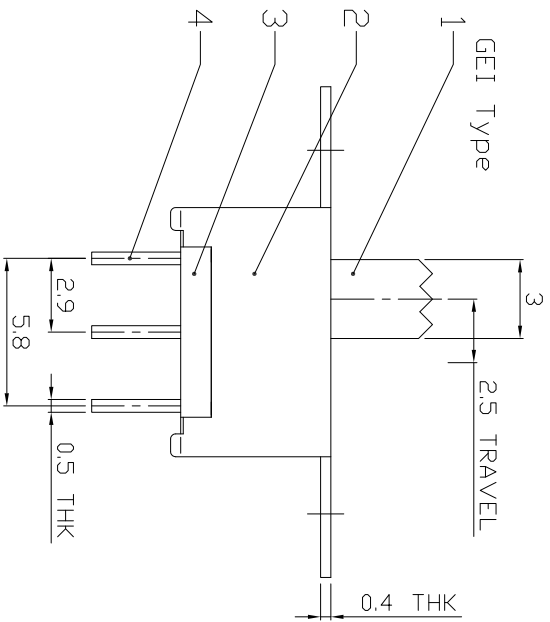
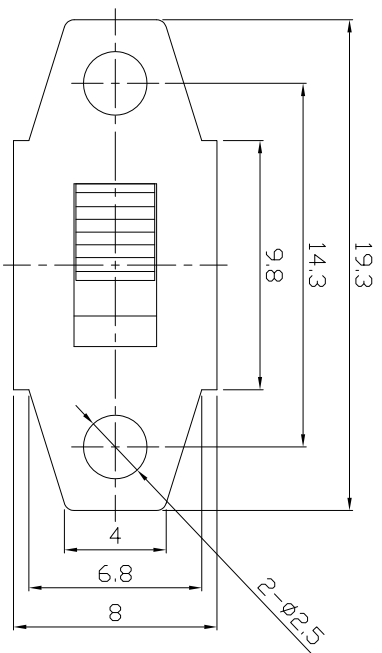




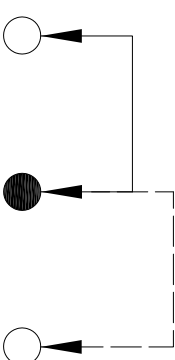
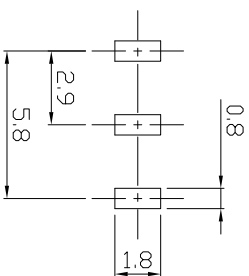
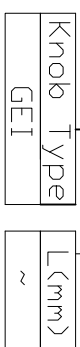
RoHS  
Compliant  
2002/95/EC

DIMENSIONS



MODEL CODE

SS-12E06-GEI



P.C.B LAYOUT

BOTTOM VIEW

CIRCUIT DIAGRAM

ELECTRO-MECHANICAL CHARACTERISTICS

Refer to additional specifications

RATING	1A 250V AC / 2A 125V AC
CIRCUIT	1P2T
CONTACT RESISTANCE	100mΩ MAX.
TIMING	NON-SHORTING
TRAVEL	2.5mm
OPERATING FORCE	200±100gf
OPERATING LIFE(cycles)	10,000

8	STEEL BALL	STEEL	1	NATURAL	WITHIN 1.5mm: ±0.1mm	UNITS	mm
7	SPRING	STEEL WIRE	1	NATURAL	OVER 1.5mm: ±0.2mm	MAT'L	SEE NOTE
6	CONTACT	COPPER STRIP	1	Ag PLATED		FINISH	SEE NOTE
5	TERMINAL	BRASS STRIP	3	Ag PLATED		SEE NOTE	
4	BASE	PHENOLIC RESIN	1	BLACK		DR:	2016/02/17
3	FRAME	STEEL STRIP	1	Ni PLATED		CHKD:	2016/02/17
2	KNDB	9T	1	BLACK		APPD:	
1	PARTS	MATERIAL	Q'TY	FINISHING			

龙创中业电子（深圳）有限公司

TITLE: SLIDE SWITCH / VERTICAL  
PART NO.: SS-12E06

DWG NO.: ADL-12E06  
SCALE: 1/1

REV. 1/1  
CUSTOMER DRAWING

REV.	ECN.	NO.	APPD.