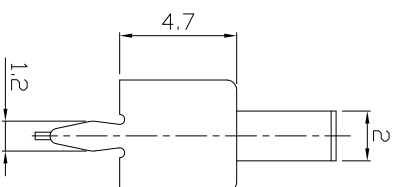
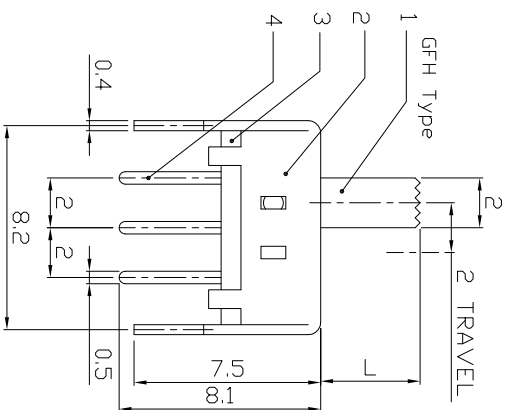
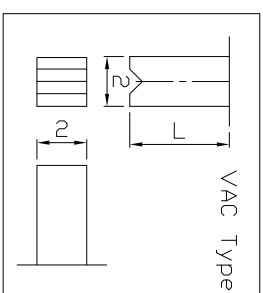
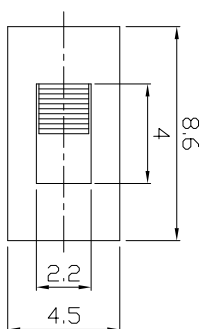




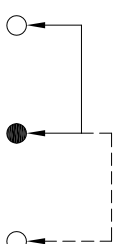
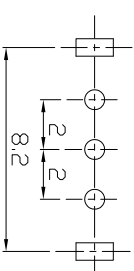
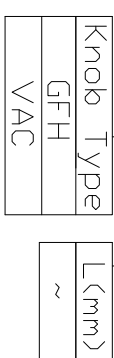
RoHS
Compliant
2002/95/EC

DIMENSIONS



MODEL CODE

SS-12D12- [GFH]



P.C.B LAYOUT

BOTTOM VIEW

CIRCUIT DIAGRAM

ELECTRO-MECHANICAL CHARACTERISTICS

Refer to additional specifications

RATING	0.3A 50V DC
CIRCUIT	1P2T
CONTACT RESISTANCE	30mΩ MAX.
TIMING	SHORTING
TRAVEL	2mm
OPERATING FORCE	250±100gf
OPERATING LIFE(cycles)	10,000

8									
7	SPRING PLATE	SUS	1	NATURAL					
6	CONTACT	PBS	1	Ag CLAD					
4	TERMINAL	BRASS	1	Ag PLATED					
3	TERMINAL CASE	PHENOLIC RESIN	1	NATURAL					
2	COVER	MILD STEEL	1	Ni PLATED					
1	KNDB	NYLON+P.F.G	1	BLACK					
ND.	PARTS	MATERIAL	Q'TY	FINISHING					

	WITHIN 1.5mm: ±0.1mm	UNITS	mm
	OVER 1.5mm: ±0.2mm	MAT'L	
		SEE NOTE	
		FINISH	
		SEE NOTE	
		Q'TY	
		APPD.	

龙创中业电子（深圳）有限公司

TITLE: SLIDE SWITCH / VERTICAL

PART NO.: SS-12D12

DR: *Rocky* 2016/08/04

CHKD: *Rocky* 2016/08/04

DWG NO.: AZJ-12D12

SCALE: 3/1

SHEET: 1/1

REV: A

CUSTOMER DRAWING

REV.	ECN.	NO.	APPD.