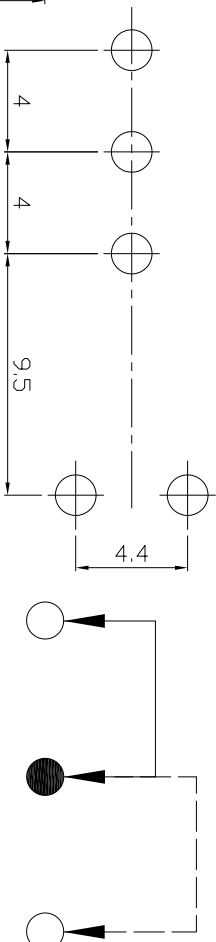
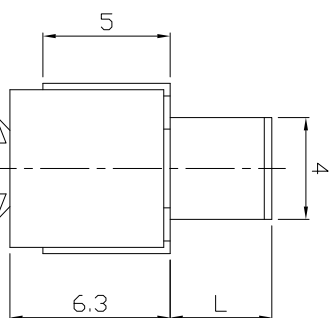
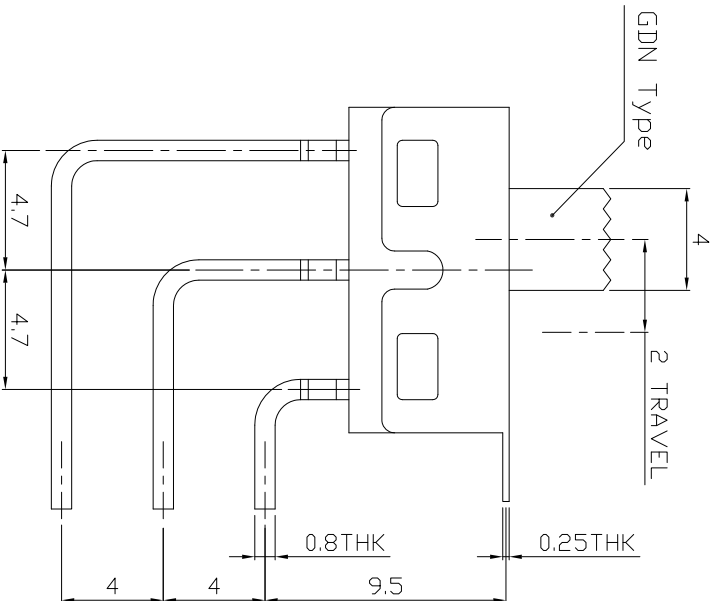
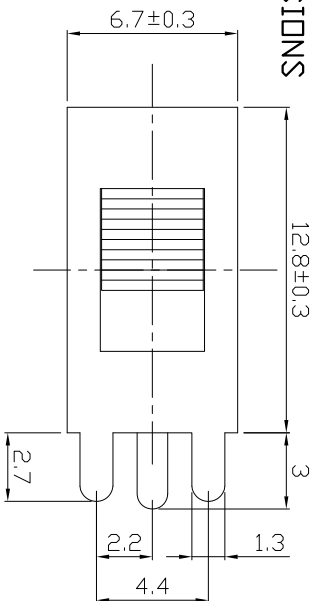




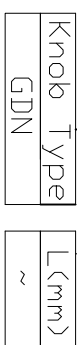
RoHS
Compliant
2002/95/EC

DIMENSIONS



MODEL CODE

SS-12D28-GDN



P.C.B LAYOUT
BOTTOM VIEW

CIRCUIT DIAGRAM

ELECTRO-MECHANICAL CHARACTERISTICS

Refer to additional specifications

RATING	AC 125V DR 28V DC 3A
CIRCUIT	1P2T
CONTACT RESISTANCE	100mΩ MAX.
TIMING	NON-SHORTING
TRAVEL	2mm
OPERATING FORCE	350±100gf
OPERATING LIFE(cycles)	10,000

龙创中业电子（深圳）有限公司

TITLE: SLIDE SWITCH / VERTICAL
PART NO.: SS-12D28

DR: *Rocky* 2016/02/17 DWG NO.: ADL-12D28
CHKD: *Rocky* 2016/02/17 SCALE SHEET REV. 1/1 A
APPD: CUSTOMER DRAWING

NO.	PARTS	MATERIAL	Q'TY	FINISHING
8	SPRING	SUS	1	
7	SPRING PLATE	PBS	1	Ag PLATED
6	COVER	SUS	1	WASHING
4	CONTACT FOOT	BRASS	3	Ag PLATED
3	BAR	PA66	1	RED
2	KONB	PA66	1	BLACK
1	CASE	PA9T	1	RED
ND.	PARTS	MATERIAL	Q'TY	FINISHING

WITHIN 1.5mm: ±0.1mm
OVER 1.5mm: ±0.2mm

THESE DRAWINGS AND SPECIFICATIONS ARE THE PROPERTY OF ACCURATE INNOTECH INC. AND SHALL NOT BE REPRODUCED, COPIED OR TRANSMITTED IN ANY FORM OR BY ANY MEANS WITHOUT THE WRITTEN CONSENT OF ACCURATE INNOTECH INC.

UNITS	mm
MAT'L	SEE NOTE
FINISH	SEE NOTE
Q'TY	CHKD: <i>Rocky</i> 2016/02/17
APPD:	SCALE SHEET REV. 1/1 A

REV.	ECN.	NO.	APPD.