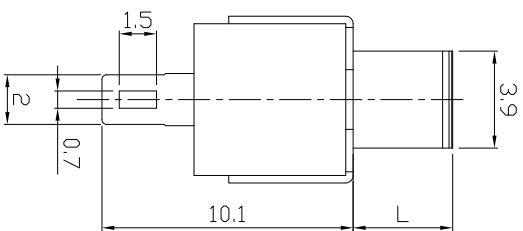
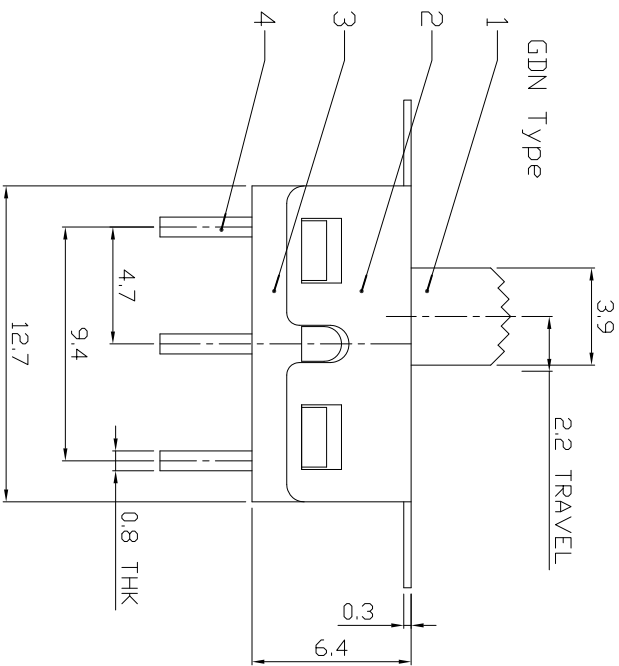
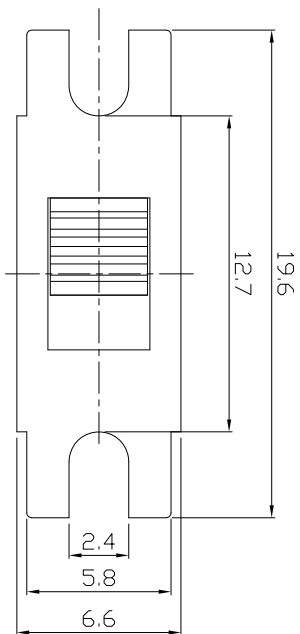


DIMENSIONS



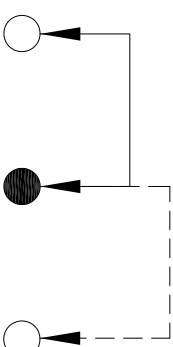
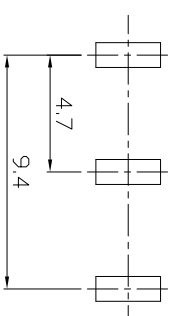
MODEL CODE

SS-12D08-GDN-B

Knob Type
GDN

L(mm)
~

Case Color
B Black
R Red



P.C.B LAYOUT
BOTTOM VIEW

CIRCUIT DIAGRAM

ELECTRO-MECHANICAL CHARACTERISTICS

Refer to additional specifications

RATING	2A 125V AC
CIRCUIT	1P2T
CONTACT RESISTANCE	100mΩ MAX.
TIMING	NON-SHORTING
TRAVEL	2.2mm
OPERATING FORCE	250±100gf
OPERATING LIFE(cycles)	10,000

8	STEEL BALL	STEEL	1	NATURAL
7	SPRING	STEEL WIRE	1	NATURAL
6	CONTACT	BRASS STRIP	1	Ag PLATED
4	TERMINAL	BRASS STRIP	3	Ag PLATED
3	CASE	PA66	1	RED/BLACK
2	COVER	SUS	1	NATURAL
1	KNDB	PA66	1	BLACK
ND.	PARTS	MATERIAL	Q'TY	FINISHING

WITHIN 1.5mm: ±0.1mm
OVER 1.5mm: ±0.2mm

UNITS mm
MATERIAL SEE NOTE
FINISH SEE NOTE

龙创中业电子（深圳）有限公司

TITLE: SLIDE SWITCH / VERTICAL
PART NO.: SS-12D08

DR: Ricky 2015/07/07 DWG NO: ADL-12D08
CHKD: Ricky 2015/07/07 SCALE SHEET REV. 1/1 A
APPD: CUSTOMER DRAWING

REV.	ECN.	NO.	APPD.