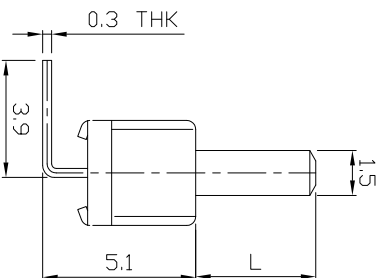
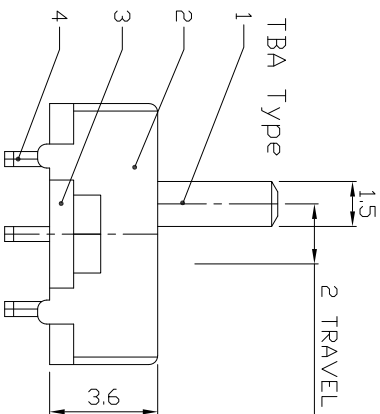
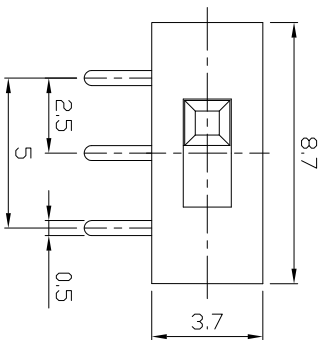




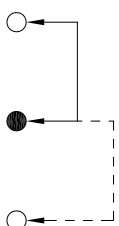
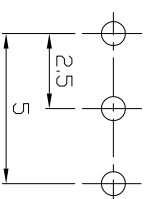
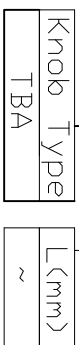
RoHS
Compliant
2002/95/EC

DIMENSIONS



MODEL CODE

SS-12D03-TBA



P.C.B LAYOUT

BOTTOM VIEW

CIRCUIT DIAGRAM

ELECTRO-MECHANICAL CHARACTERISTICS

Refer to additional specifications

RATING	0.3A 50V DC
CIRCUIT	1P2T
CONTACT RESISTANCE	100mΩ MAX.
TIMING	NON-SHORTING
TRAVEL	2mm
OPERATING FORCE	150±80gf
OPERATING LIFE(cycles)	10,000

8																			
7																			
6																			
5	CONTACT CLIP	PBS STRIP	1	Ag PLATED															
4	TERMINAL	BRASS STRIP	3	Ag PLATED															
3	BASE	PHENOLIC RESIN	1	NATURAL															
2	FRAME	STEEL STRIP	1	Ni PLATED															
1	KNDB	POM	1	BLACK															
ND.	PARTS	MATERIAL	Q'TY	FINISHING															

龙创中业电子（深圳）有限公司

TITLE: SLIDE SWITCH / VERTICAL
PART NO.: SS-12D03

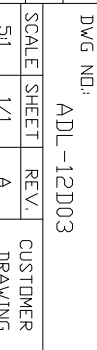
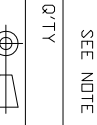
DR: Ricky 2015/07/07
CHKD: Ricky 2015/07/07
SCALE: 5:1

APPD: DWG NO.: ADL-12D03
SHEET: 1/1
REV: A
CUSTOMER DRAWING

REV.	ECN.	NO.	APPL.

WITHIN 1.5mm: ±0.1mm
OVER 1.5mm: ±0.2mm

UNITS: mm
MATERIAL: SEE NOTE
FINISH: SEE NOTE
Q'TY: APPD



THESE DRAWINGS AND SPECIFICATIONS ARE THE PROPERTY OF ACCURATE INNOTECH INC. AND SHALL NOT BE REPRODUCED, COPIED OR TRANSMITTED IN ANY FORM OR BY ANY MEANS WITHOUT THE WRITTEN CONSENT OF ACCURATE INNOTECH INC.