



# 超小型钮子开关 Sub-Miniature Toggle Switch SMTS Series



## 型号说明 Ordering Information



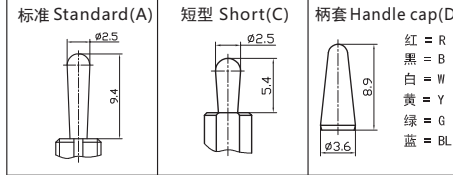
## 技术特性 Specification

- 规格 Rating: 3A 125VAC; 1.5A 250VAC
- 接触电阻 Contact Resistance: 20mΩ max
- 绝缘电阻 Insulation Resistance: 500VDC 1000MΩ min
- 耐压 Dielectric Strength: 1000VAC, 1Minute
- 操作温度 Operating Temperature: -25°C ~ +85°C
- 电气寿命 Electrical Life: 10,000 Cycles

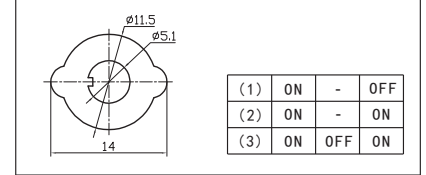
### 电路特性 Circuitry trait

01	ON	-	OFF
02	ON	-	ON
03	ON	OFF	ON

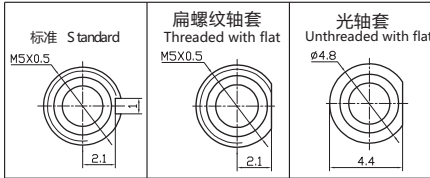
### 手柄种类 Handle options



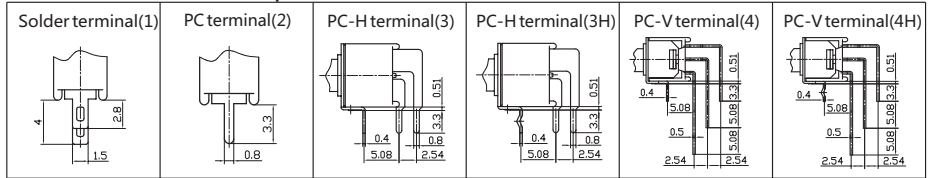
### 铭牌 Nameplate



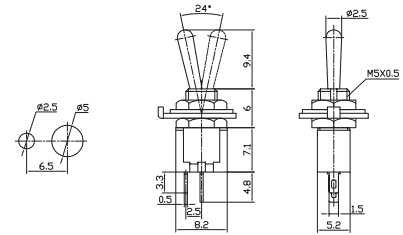
### 轴套种类 Bushing options



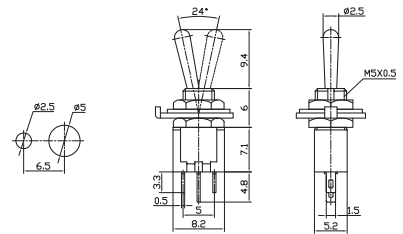
### 端子种类 Terminal options



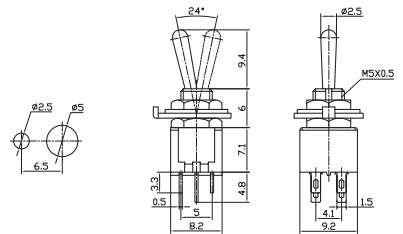
**SMTS-101** ON-OFF  
SPST 2P



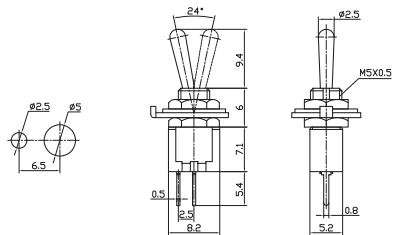
**SMTS-102** ON-ON  
SPDT 3P



**SMTS-202** ON-ON  
DPDT 6P



**SMTS-101-A2** ON-OFF  
SPST 2P



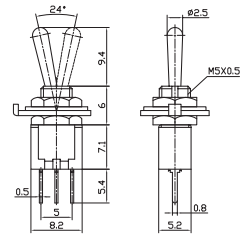


# 超小型钮子开关 Sub-Miniature Toggle Switch

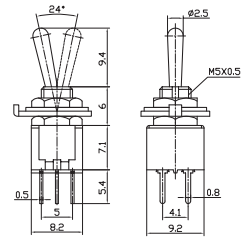
# SMTS Series



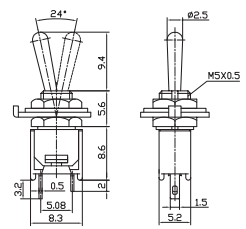
**SMTS-102-A2** ON-ON  
SPDT 3P



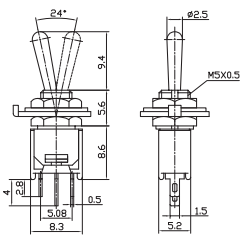
**SMTS-202-A2** ON-ON  
DPDT 6P



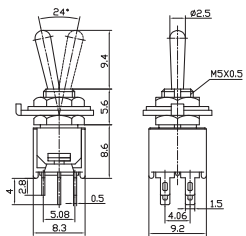
**SMTS-101-2A1** ON-OFF  
SPST 2P



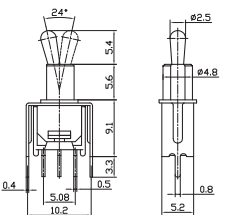
**SMTS-102-2A1** ON-ON  
**SMTS-103-2A1** ON-OFF-ON  
SPDT 3P



**SMTS-202-2A1** ON-ON  
**SMTS-203-2A1** ON-OFF-ON  
DPDT 6P



**SMTS-102-2C2T** ON-ON  
**SMTS-103-2C2T** ON-OFF-ON  
SPDT 3P



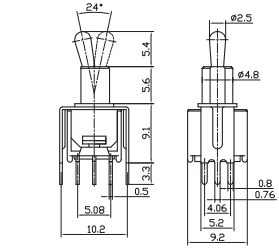


# 超小型钮子开关 Sub-Miniature Toggle Switch

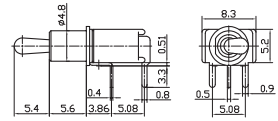
# SMTS Series



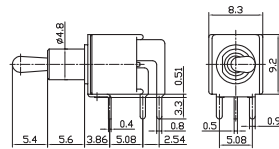
SMTS-202-2C2T ON-ON  
 SMTS-203-2C2T ON-OFF-ON  
 DPDT 6P



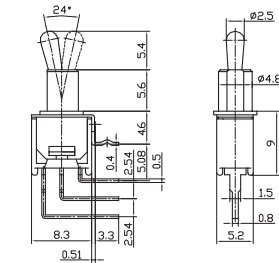
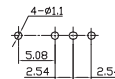
SMTS-102-2C3 ON-ON  
 SMTS-103-2C3 ON-OFF-ON  
 SPDT 3P



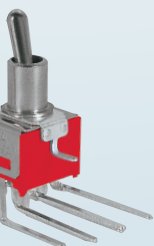
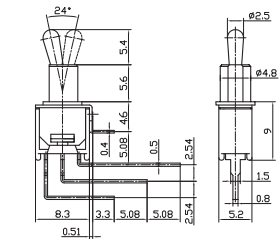
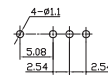
SMTS-202-2C3 ON-ON  
 SMTS-203-2C3 ON-OFF-ON  
 DPDT 6P



SMTS-102-2C4B ON-ON  
 SMTS-103-2C4B ON-OFF-ON  
 SPDT 3P



SMTS-102-2C4 ON-ON  
 SMTS-103-2C4 ON-OFF-ON  
 SPDT 3P



SMTS-202-2C4 ON-ON  
 SMTS-203-2C4 ON-OFF-ON  
 DPDT 6P  
 L=4.06; 5.08

