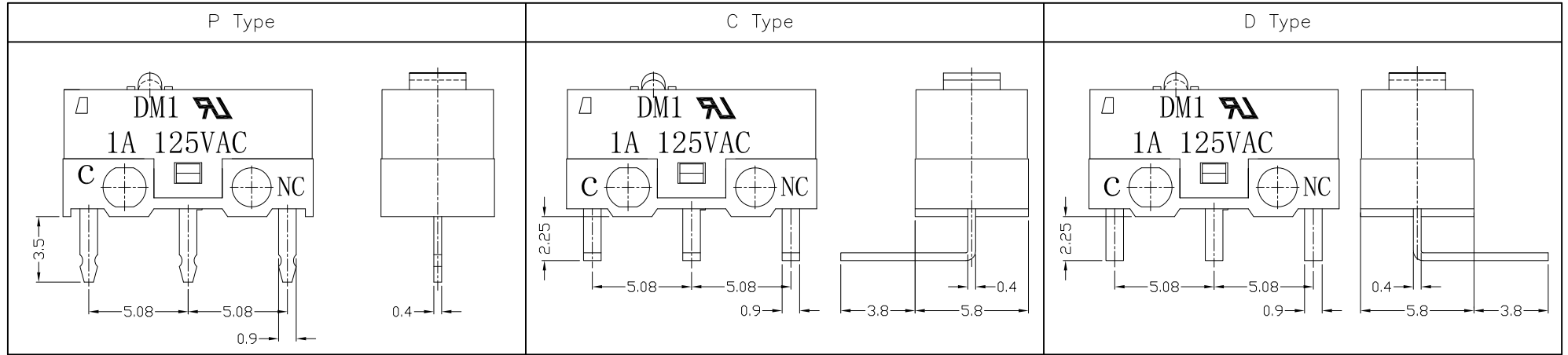




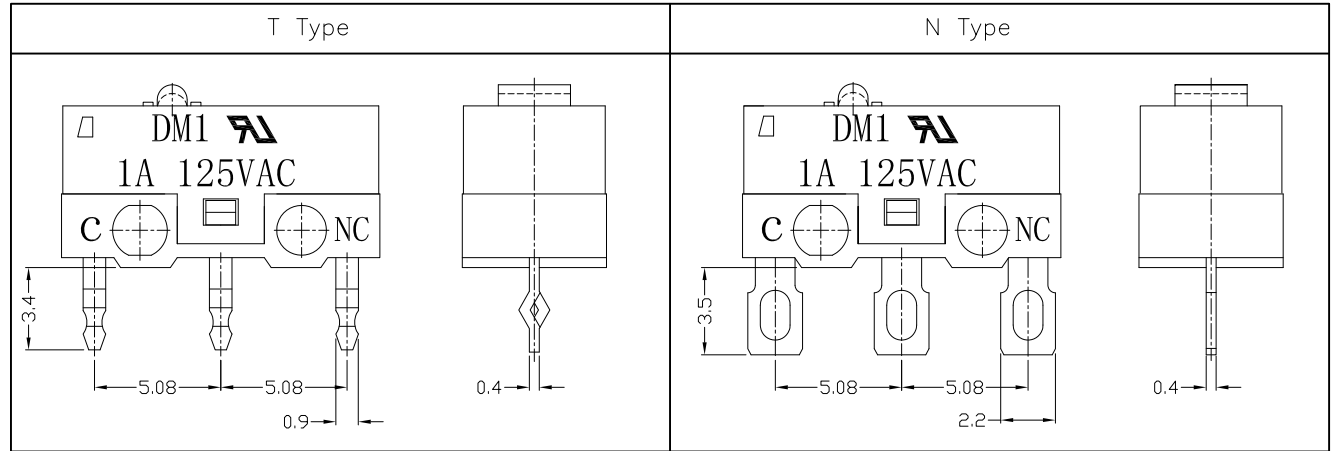
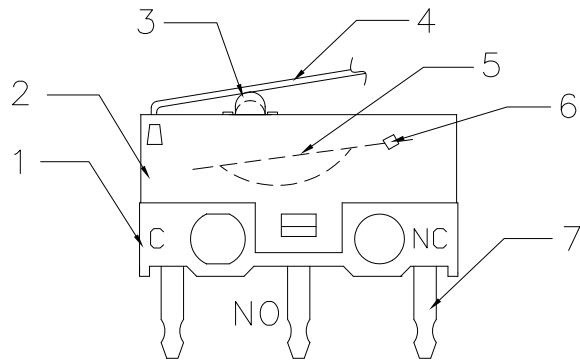
RoHS  
Compliant  
2002/95/EC

REV.	ECN.	NO.	APPD.

### Terminal Type



### Structure chart



### Material list

NO.	PARTS	MATERIAL	Q'TY	FINISHING
8				
7	Terminal	C2680	3	
6	Contact	Silver alloy	1	
5	Spring Plate	C1720	1	
4	Lever	SUS301	1	
3	Button	PBT	1	WHITE
2	Case	PBT	1	BLACK
1	Base	PBT	1	WHITE

Tolerance: ±0.2

UNITS mm

MAT'L

SEE NOTE

FINISH

SEE NOTE

Q'TY

THESE DRAWINGS AND SPECIFICATIONS ARE THE PROPERTY OF ACCURATE INNOVATECH INC AND SHALL NOT BE REPRODUCED, COPIED OR USED IN ANY MANNER WITHOUT THE PRIOR WRITTEN CONSENT OF ACCURATE INNOVATECH INC.

龙创中业电子(深圳)有限公司

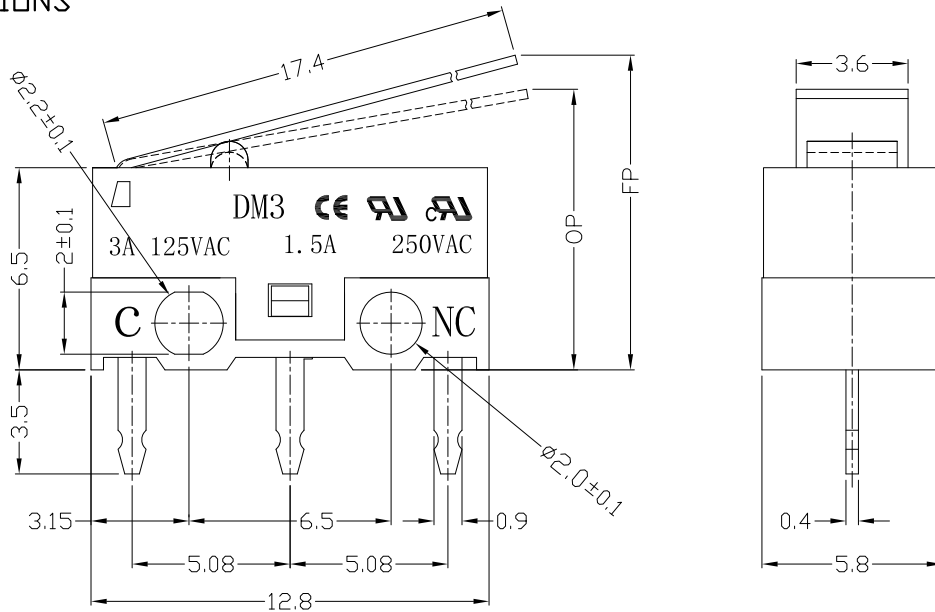
TITLE:	MICRO SWITCH DM SERIES	PART NO.:	DM1-03X-XX-3
DR:	Ricky 2017/2/17	DWG NO.:	ATD-03X-XX-3
CHKD:	Ricky 2017/2/17	SCALE	1:1
APPD:		SHEET	2/2
		REV.	A
		CUSTOMER DRAWING	



RoHS  
Compliant  
2002/95/EC

REV.	ECN. NO.	APPD.

## DIMENSIONS



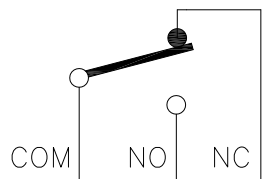
## 1.Functional spec

1.1 Rated Voltage	125VAC/250VAC
1.2 Rated Current	3A/1.5A
1.3 Contact Resistance	≤100mΩ(Initial value)
1.4 Operating Force	25±15gf   30±15gf
1.5 Bounce Time	
1.6 Free Position	11.0±1.0mm
1.7 Operating Position	9.2±1.0mm
1.8 Position Travel	
1.9 Return Force	

## MODEL CODE

DM 3-03 X-XX-6-0  
1 2 3 4 5 6 7

- Series : DM
- Current Rating : 3=3A 125VAC ; 1.5A 250VAC
- Actuator : 00=non-lever 01-99=Lever
- Termination : see chart (P/C/D/T/N)
- Operating Force : see chart
- Button colour : 6=grey
- Cover type : 0=No two lines



CIRCUIT DIAGRAM

## 2.Reliable Rating

2.1 Mechanical Life	1,000,000 CYCLES
2.2 Electrical Life	10,000 CYCLES
2.3 Insulation Resistance	≥100MΩ DC500V
2.4 Withstand Voltage	AC500V 1 minute
2.5 Soldering Technic	Hand Soldering
2.6 Operating Temper	-25°C ~ +65°C
2.7 Ambient Humidity Used	<85%RH

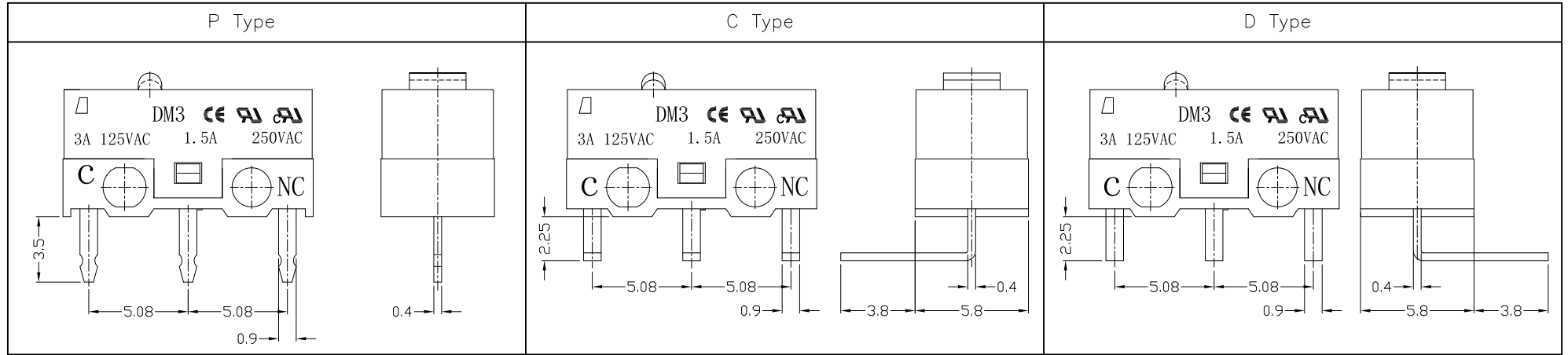
Tolerance:±0.2	UNITS mm	<b>龙创中业电子(深圳)有限公司</b>			
	MAT'L				
	SEE NOTE	TITLE: MICRO SWITCH DM SERIES	PART NO: DM3-03P-XX-6-0		
	FINISH	DR: Ricky 2017/2/21	DWG NO: ATD-03X-XX-6-0		
	SEE NOTE	CHKD: Ricky 2017/2/21	SCALE	SHEET	REV.
THESE DRAWINGS AND SPECIFICATIONS ARE THE PROPERTY OF ACCURATE INNOTECH INC AND SHALL NOT BE REPRODUCED, COPIED OR USED IN ANY MANNER WITHOUT THE PRIOR WRITTEN CONSENT OF ACCURATE INNOTECH INC.	Q'TY	APPD:	1:1	1/2	A
			CUSTOMER DRAWING		



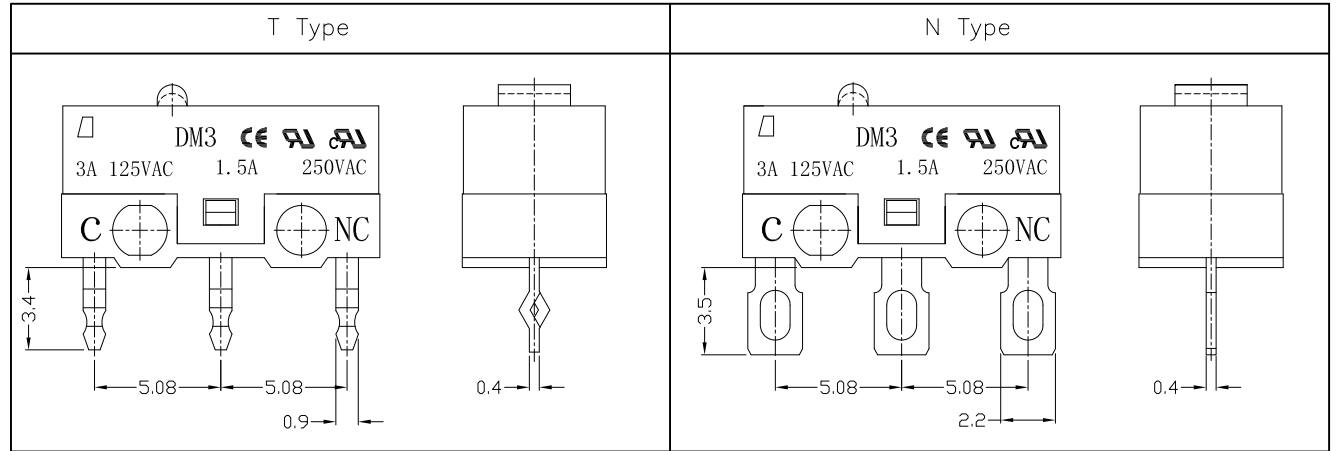
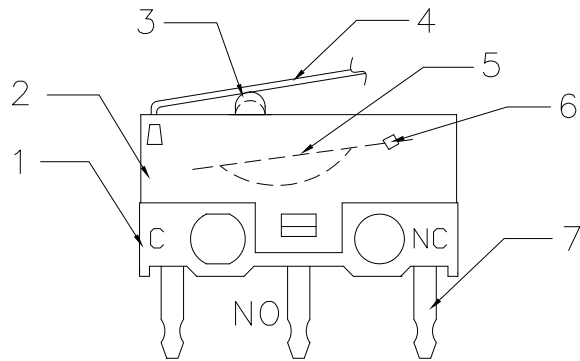
RoHS  
Compliant  
2002/95/EC

REV.	ECN.	NO.	APPD.

### Terminal Type



### Structure chart



### Material list

NO.	PARTS	MATERIAL	Q'TY	FINISHING
8				
7	Terminal	C2680	3	
6	Contact	Silver alloy	3	
5	Spring Plate	C1720	1	
4	Lever	SUS301	1	
3	Button	Nylon	1	GREY
2	Case	PBT	1	BLACK
1	Base	PBT	1	WHITE

Tolerance: ±0.2

UNITS mm

MAT'L

SEE NOTE

FINISH

SEE NOTE

Q'TY

THESE DRAWINGS AND SPECIFICATIONS ARE THE PROPERTY OF ACCURATE INNOTECH INC AND SHALL NOT BE REPRODUCED, COPIED OR USED IN ANY MANNER WITHOUT THE PRIOR WRITTEN CONSENT OF ACCURATE INNOTECH INC.

龙创中业电子 (深圳) 有限公司			
TITLE: MICRO SWITCH DM SERIES		PART NO.: DM3-03X-XX-6-0	
DR: Ricky 2017/2/21		DWG NO.: ATD-03X-XX-6-0	
CHKD: Ricky 2017/2/21		SCALE	SHEET
APPD:		1:1	2/2
		REV.	CUSTOMER DRAWING
		A	