

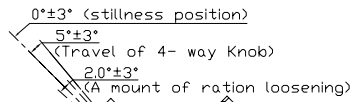
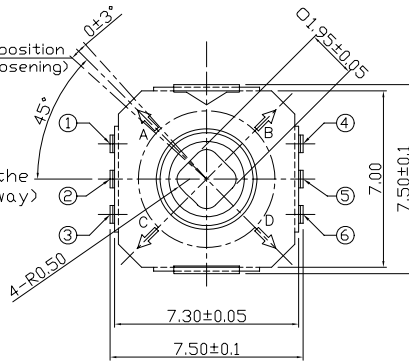


RoHS Compliant
2002/95/EC

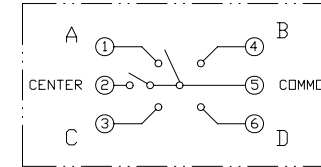
REV.	ECN. NO.	APPD.

DIMENSIONS

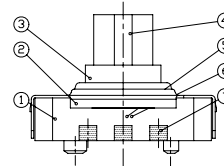
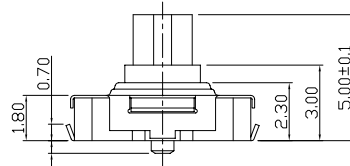
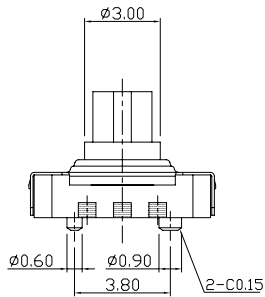
Stillness position
2°±3°(A mount of ration Loosening)



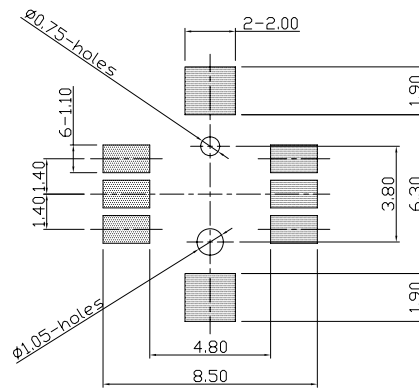
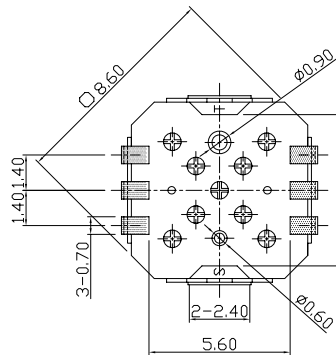
An Arrow (→) is the operation direction (4-way)



CIRCUIT DIAGRAM



P.C.B MOUNTING PATTERN DIMENSION



ELECTRO-MECHANICAL CHARACTERISTICS

Refer to additional specifications

RATING	DC12V 50mA
CONTACT RESISTANCE	500mΩ MAX.
TRAVEL	(1)4-DIRECTIONAL : 0.25 ±0.1mm (2)CENTER : 0.15 ±0.1mm
OPERATING FORCE	(1)4-DIRECTIONAL : 130 ±50gf (2)CENTER : 240 ±50gf
OPERATING LIFE(cycles)	100,000 CYCLES Min

8									
7	TERMINAL	Phosphor Bronze	1			.X ±0.2	X. ±2°	UNITS	mm
6	CONTACT	Stainless	1					MAT'L	
5	CONTACT	Stainless	1					SEE NOTE	
4	STEM A	L.C.P	1					FINISH	
3	STEM B	L.C.P	1					SEE NOTE	
2	COVER	German Silver	1					Q'TY	
1	CASE	L.C.P	1						
NO.	PARTS	MATERIAL	Q'TY	FINISHING					

THESE DRAWINGS AND SPECIFICATIONS ARE THE PROPERTY OF ACCURATE INNOTECH INC AND SHALL NOT BE REPRODUCED, COPIED OR USED IN ANY MANNER WITHOUT THE PRIOR WRITTEN CONSENT OF ACCURATE INNOTECH INC.

DONGGUAN MINGJU ELECTRONICS CO.,LTD			
TITLE: 5 DIRECTION TACT SWITCH		PART NO.: AT-1501E SERIES	
DR: <i>Ricky</i> 2015/05/11		DWG NO.: AKS-1501E	
CHKD: <i>Ricky</i> 2015/05/11		SCALE	SHEET
APPD:		5:1	1/1
		REV.	CUSTOMER DRAWING
		A	