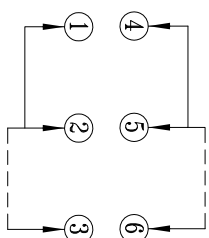
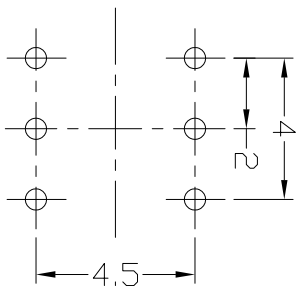
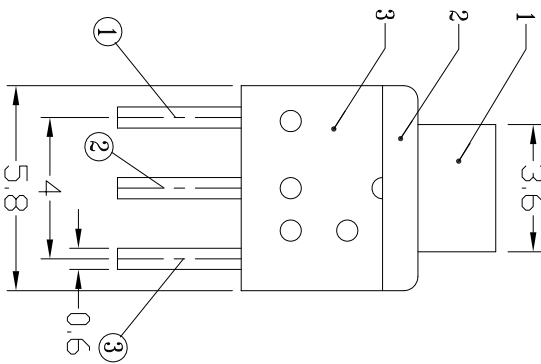
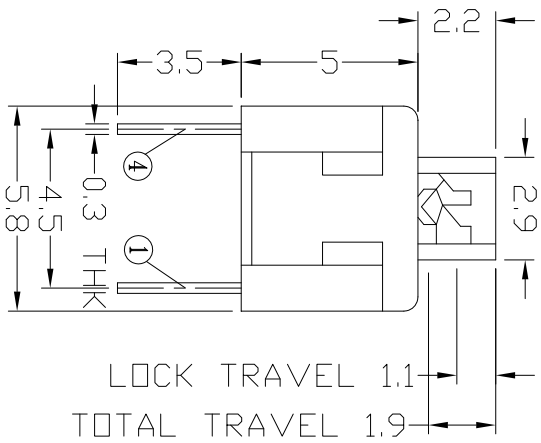




RoHS
Compliant
2002/95/EC

DIMENSIONS



P.C.B LAYOUT
TOP VIEW

CIRCUIT DIAGRAM

ELECTRO-MECHANICAL CHARACTERISTICS

Refer to additional specifications

RATING	DC12V 0.1A
CIRCUIT	2P2T
CONTACT RESISTANCE	70mΩ MAX.
TIMING	NON-SHORTING
OPERATING MODE	SELF-LDCK AP-2216FL NON-LDCK AP-2216FN
STROKE	FULL 1.9mm LDCK 1.1mm
OPERATING FORCE	150±50gf
OPERATING LIFE(cycles)	10,000

6		WITHIN 1.5mm: ±0.1mm	UNITS	mm
5	CAM STICK	OVER 1.5mm: ±0.2mm	MAT'L	
4	SPRING		SEE NOTE	
3	CASE		FINISH	
2	COVER		SEE NOTE	
1	KNDB		Q'TY	
ND	PARTS		APPD:	

DONGGUAN MINGJU ELECTRONICS CO.,LTD

TITLE: PUSH SWITCH / VERTICAL
PART NO.: AP-2216FL & AP-2216FN

DR: *Stacy* 2015/03/23
DWG NO.: ADJ-2216F

CHKD: *Stacy* 2015/03/23

SCALE: 5:1
SHEET: 1/1
REV. A
CUSTOMER DRAWING

REV.	ECN.	NO.	APPD.