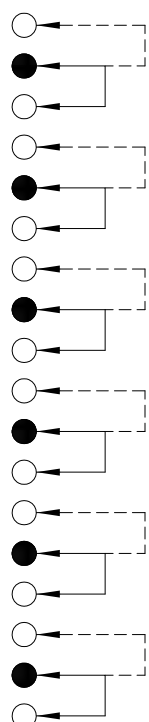
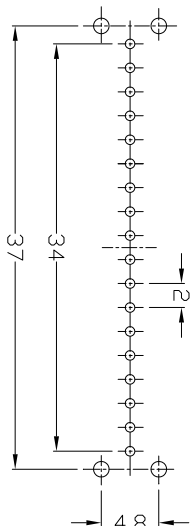




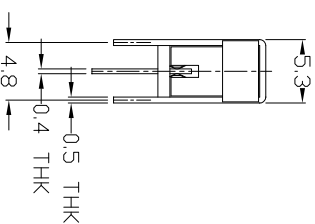
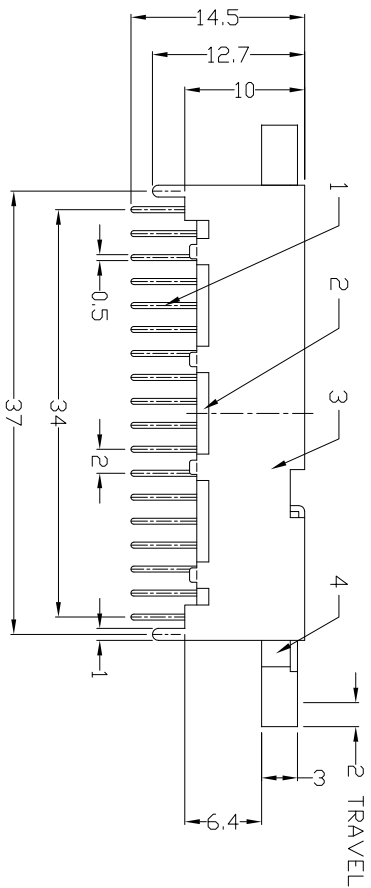
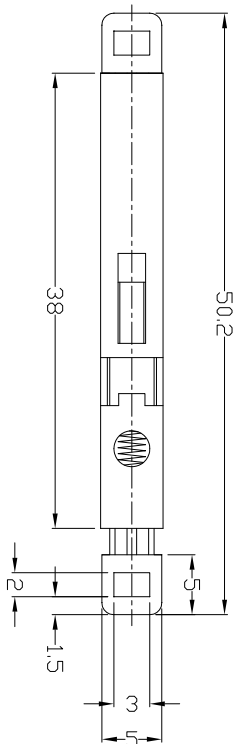
**RoHS**  
Compliant  
2002/95/EC

### DIMENSIONS



P.C.B LAYOUT  
BOTTOM VIEW

CIRCUIT DIAGRAM



### ELECTRD-MECHANICAL CHARACTERISTICS

Refer to additional specifications

RATING	DC50V 0.3A
CIRCUIT	6P2T
CONTACT RESISTANCE	100mΩ MAX.
TIMING	NON-SHORTING
OPERATING MODE	NON-LOCK
STROKE	FULL 2mm
OPERATING FORCE	300±100gf
OPERATING LIFE(cycles)	10,000

8																				
7																				
6	SPRING	STEEL WIRE	1	NATURAL																
5	CONTACT CLIP	PBS STRIP	6	AG PLATED																
4	KNDB	ABS	1	BLACK																
3	FRAME	STEEL STRIP	1	NI PLATED																
2	BASE	PHENOLIC RESIN	1	NATURAL																
1	TERMINAL	BRASS STRIP	18	AG PLATED																
ND.	PARTS	MATERIAL	Q'TY	FINISHING																

WITHIN 1.5mm±0.1mm  
OVER 1.5mm±0.2mm

UNITS mm  
MAT'L SEE NOTE  
FINISH SEE NOTE

**DONGGUAN MINGJU ELECTRONICS CO.,LTD**

TITLE: PUSH SWITCH / HORIZONTAL  
PART NO.: PS-62D01N

DR: *Stacy* 2015/04/08  
CHKD: *Stacy* 2015/04/08  
SCALE: 1/1

APPD: DWG NO.: PS-62D01N  
SHEET: 1/1  
REV. A  
CUSTOMER DRAWING