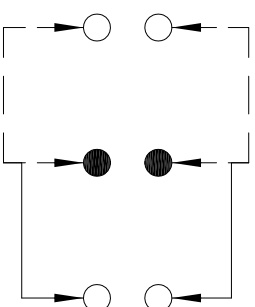
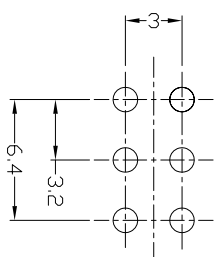
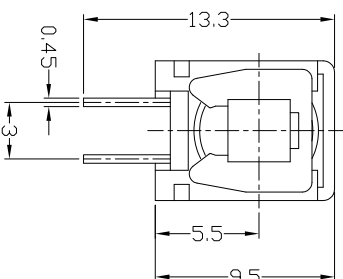
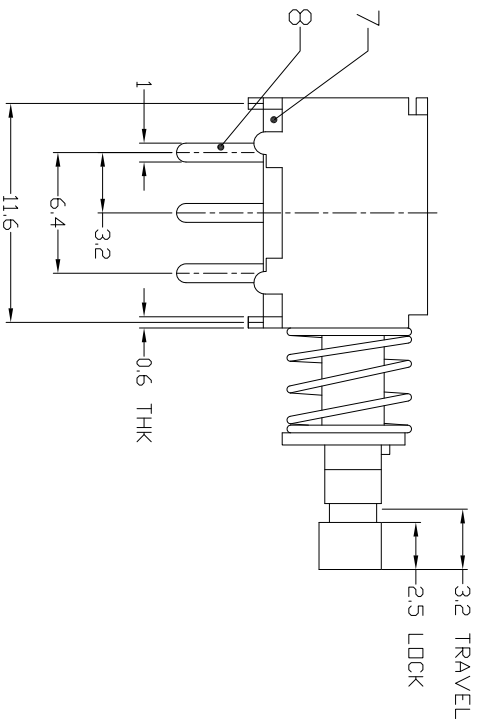
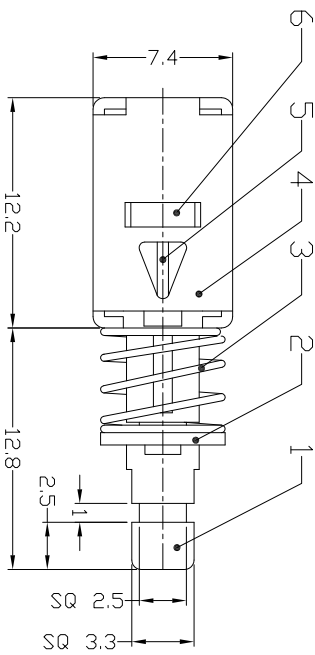




RoHS
Compliant
2002/95/EC

DIMENSIONS



P.C.B LAYOUT
TOP VIEW

CIRCUIT DIAGRAM

ELECTRO-MECHANICAL CHARACTERISTICS

Refer to additional specifications

RATING	DC50V 0.3A
CIRCUIT	2P2T
CONTACT RESISTANCE	30mΩ MAX.
TIMING	NON-SHORTING
OPERATING MODE	SELF-LOCK
STROKE	FULL 3.2mm LOCK 2.5mm
OPERATING FORCE	300±100gf
OPERATING LIFE(cycles)	10,000

9	CONTACT CLIP	PBS C5210-EH	2	Ag CLAD
8	TERMINAL	BRASS STRIP	6	(0.5 μm) Ag PLATED
7	BASE	PHENOLIC RESIN	1	NATURAL
6	SPRING PLATE	PBS STRIP	1	NATURAL
5	CAM STICK	PBS WIRE	1	Ni PLATED
4	FRAME	STEEL STRIP	1	Ni PLATED
3	SPRING	STEEL WIRE	1	Ni PLATED
2	BLOCK	STEEL STRIP	1	Ni PLATED
1	KNDB	POM/NYL DMF-G	1	BLACK/BLUE/YELLOW
ND.	PARTS	MATERIAL	QTY	FINISHING

WITHIN 1.5mm: ±0.1mm
OVER 1.5mm: ±0.2mm

UNITS: mm
MAT'L: SEE NOTE
FINISH: SEE NOTE

THESE DRAWINGS AND SPECIFICATIONS ARE THE PROPERTY OF ACCURATE INNOTECH INC. AND SHALL NOT BE REPRODUCED, COPIED OR TRANSMITTED IN ANY FORM OR BY ANY MEANS WITHOUT THE WRITTEN CONSENT OF ACCURATE INNOTECH INC.

DR: *Stacy* 2015/03/27
CHKD: *Stacy* 2015/03/27
APPD:

DONGGUAN MINGJU ELECTRONICS CO.,LTD

TITLE: PUSH SWITCH / HORIZONTAL
PART NO.: PS-22F74L

DR: *Stacy* 2015/03/27
DWG NO.: PS-22F74L

SCALE: 2:1
SHEET: 1/1
REV: A
CUSTOMER DRAWING

REV.	ECN.	NO.	APPD.