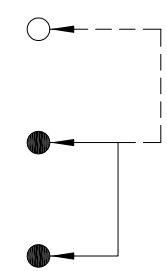
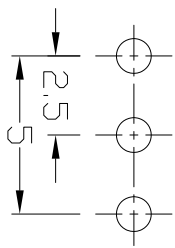
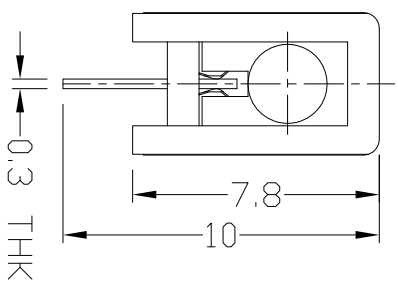
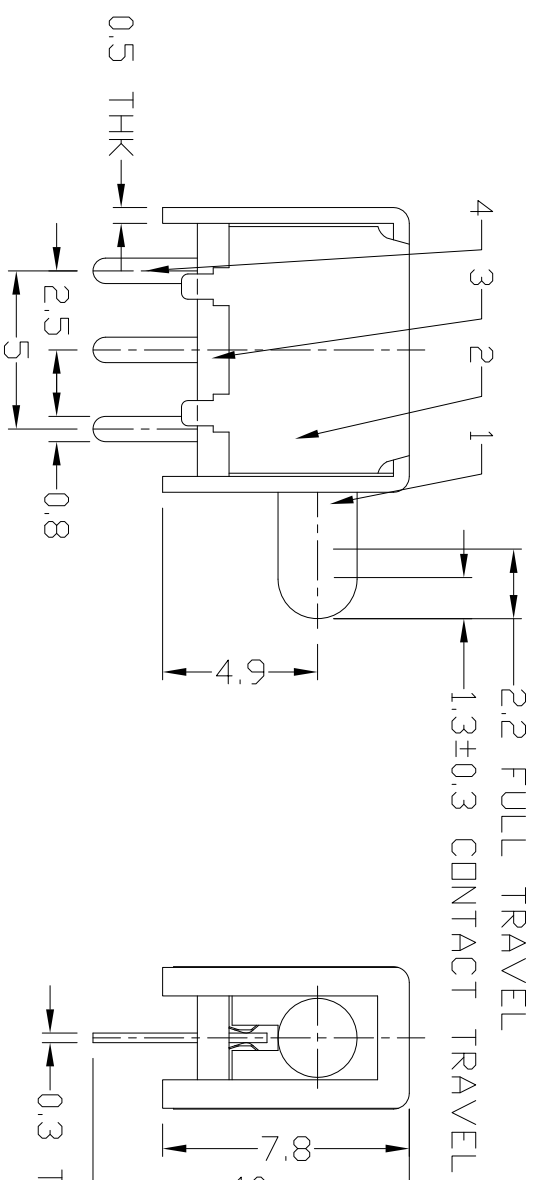
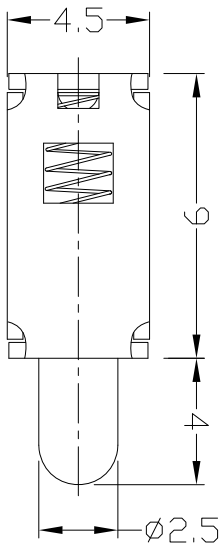


DIMENSIONS



P.C.B LAYOUT
BOTTOM VIEW

CIRCUIT DIAGRAM

ELECTRO-MECHANICAL CHARACTERISTICS
Refer to additional specifications

RATING	DC50V 0.3A
CIRCUIT	1P2T
CONTACT RESISTANCE	100mΩ MAX.
TIMING	NON-SHORTING
OPERATING MODE	NON-LOCK
STROKE	FULL 2.2mm CONTACT 1.3±0.3
OPERATING FORCE	70±20gf
OPERATING LIFE(cycles)	10,000

8																			
7	SPRING	STEEL WIRE	1	NATURAL	WITHIN 1.5mm±0.1mm	UNITS	mm												
6	CONTACT CLIP	PBS STRIP	1	Ag PLATED	OVER 1.5mm±0.2mm	MAT'L	SEE NOTE												
5	TERMINAL	BRASS STRIP	3	Ag PLATED		FINISH	SEE NOTE												
4	BASE	PHENOLIC RESIN	1	NATURAL		Q'TY													
3	FRAME	STEEL STRIP	1	Ni PLATED															
2	KNDB	POM	1	BLACK															
1	PARTS	MATERIAL	Q'TY	FINISHING															
<p>THESE DRAWINGS AND SPECIFICATIONS ARE THE PROPERTY OF ACCURATE INNOTECH INC. AND SHALL NOT BE REPRODUCED, COPIED OR TRANSMITTED IN ANY FORM OR BY ANY MEANS WITHOUT THE WRITTEN CONSENT OF ACCURATE INNOTECH INC.</p>										<p>DONGGUAN MINGJU ELECTRONICS CO.,LTD</p> <p>TITLE: PUSH SWITCH / HORIZONTAL</p> <p>DR: <i>Stacy</i> 2015/03/30</p> <p>CHKD: <i>Stacy</i> 2015/03/30</p> <p>APPD: 4:1</p> <p>PART NO.: PS-12D33N</p> <p>DWG NO.: PS-12D33</p> <p>SCALE SHEET 1/1</p> <p>REV. A</p> <p>CUSTOMER DRAWING</p>									

REV.	ECN.	NO.	APPL.