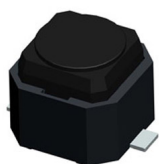


# WATERPROOF TACT SWITCH / LED TACT SWITCH

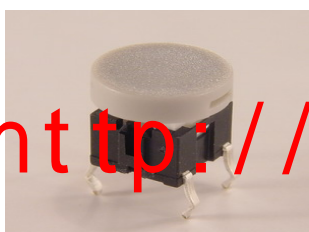
PS0601P1S1XX-V02



PS0601P1S1XX-V



LD-0-C0-C



LD3-P-00G-2S



<http://pady-switch.com>

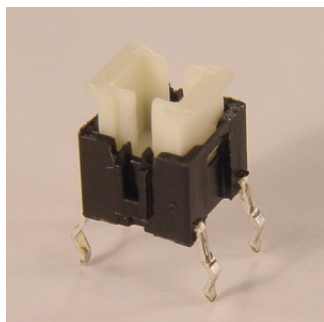
LD1-00-00U-0P



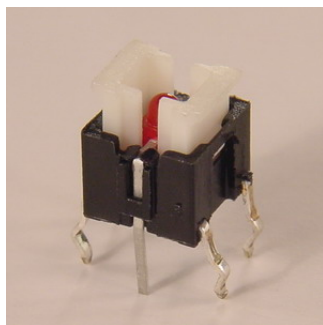
LD1-00-00U-0T



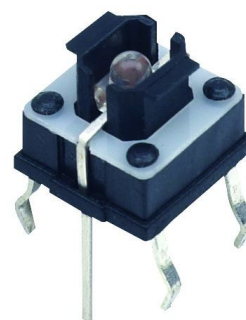
LD-0-C0-E0



LD-C0-E1



LD3-00R-2S



# WATERPROOF TACT SWITCH

## Characteristics

Product No.	Circuit	Travel	Free Mode	Operating force	Soldering
PS0601P1S1XX-V02	1P1T	0.20 mm	OFF	As shown in table below	Manual, Reflow
PS0601P1S1XX-V					

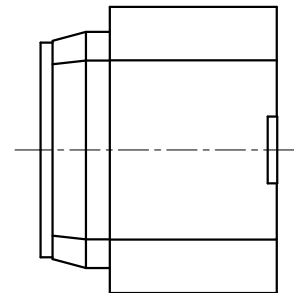
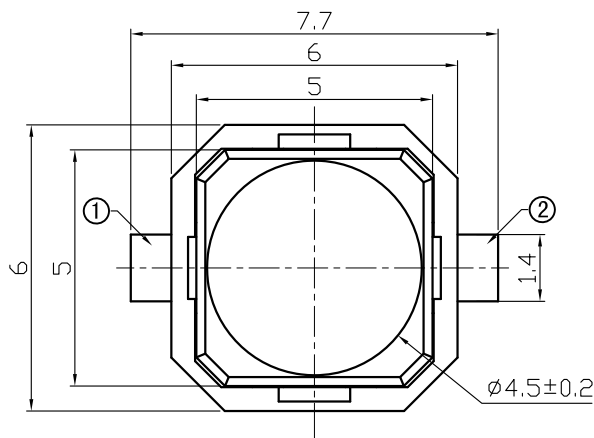
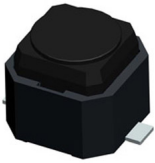
Operating temperature range	Rating (max.) (Resistive load)	Electrical Performance		
		Contact resistance	Insulation resistance	Voltage proof
-30 °C to 80 °C	0.05A DC 12V	100 mΩ max.	10 MΩ min. , 100 V DC	100V AC , 1 min.

Mechanical Performance				
Terminal Strength	Actuator Strength	Solderability	Resistance to soldering heat	
			Manual soldering	Reflow soldering
0.5 kgf for 15 seconds	3.0 kgf for 15 seconds	230 ± 5 °C, 3 ± 0.5 s	280 ± 10 °C, 3 ± 1 s	265 °C , 5 s

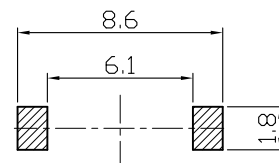
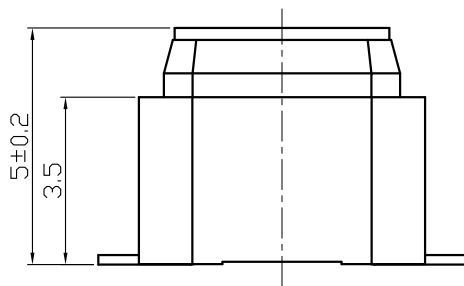
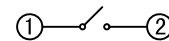
Endurance		Environmental Performance		
Operating life without load		Cold	Dry heat	Damp heat
100,000 cycles, 500 mΩ max.		-25 ± 3 °C for 48 hrs	70 ± 2 °C for 48 hrs	40 ± 2 °C, 90 to 95% RH for 96 hrs

<http://pady-switch.com>

PS0601P1S1XX-V02



CIRCUIT DIAGRAM



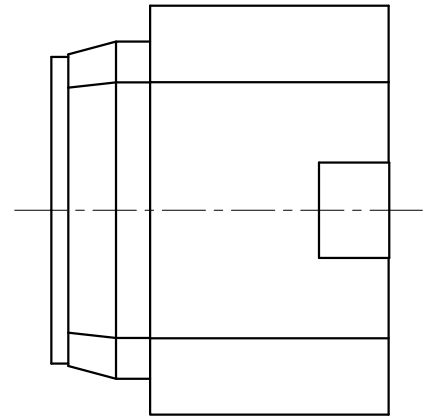
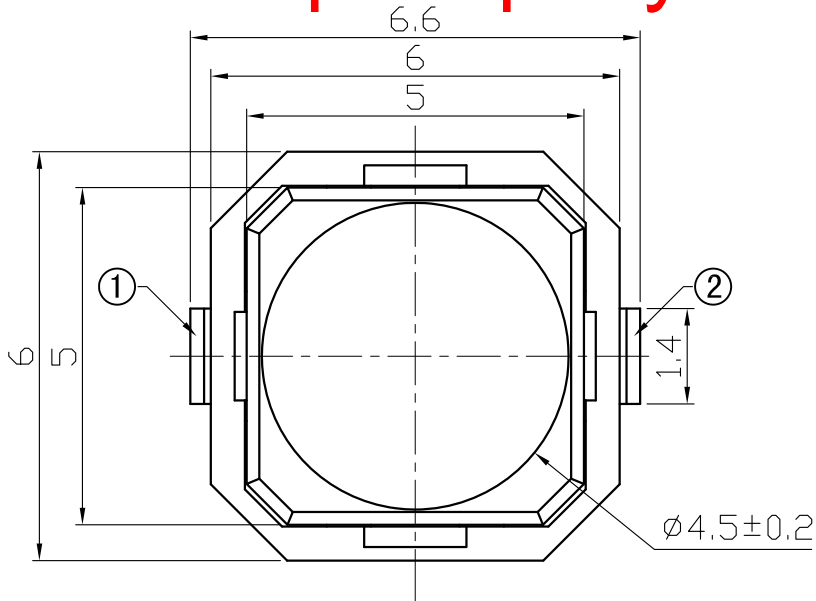
P.C.B LAND  
RECOMMENDED LAND PATTERN

# WATERPROOF TACT SWITCH

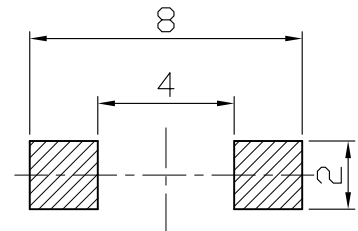
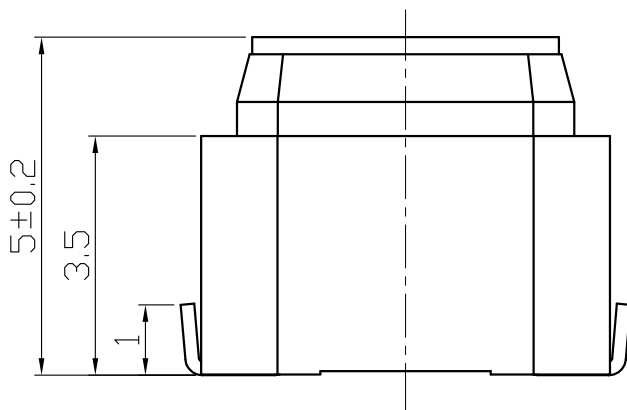
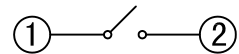
PS0601P1S1XX-V



<http://pady-switch.com>



## CIRCUIT DIAGRAM



## P.C.B LAND RECOMMENDED LAND PATTERN

# LED TACT SWITCH

## Characteristics

Product No.	Circuit	Travel	Free Mode	Operating force	Soldering
LD-0-C0-C	1P1T	0.20 mm	OFF	As shown in table below	Manual, Reflow
LD3-P-00G-2S					
LD1-00-00U-0P					
LD1-00-00U-0T					
LD-0-C0-E0					
LD-C0-E1					
LD3-00R-2S					

<http://pady-switch.com>



Operating temperature range	Rating (max.) (Resistive load)	Electrical Performance		
		Contact resistance	Insulation resistance	Voltage proof
-30 °C to 80 °C	0.05A DC 12V	100 mΩ max.	10 MΩ min. , 100 V DC	100V AC , 1 min.

Mechanical Performance				
Terminal Strength	Actuator Strength	Solderability	Resistance to soldering heat	
			Manual soldering	Reflow soldering
0.5 kgf for 15 seconds	3.0 kgf for 15 seconds	230 ± 5 °C, 3 ± 0.5 s	280 ± 10 °C, 3 ± 1 s	265 °C , 5 s

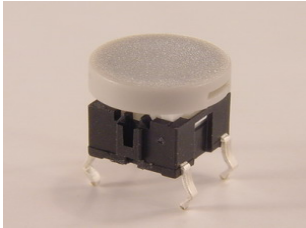
Endurance	Environmental Performance		
Operating life without load	Cold	Dry heat	Damp heat
200,000 cycles, 500 mΩ max.	-25 ± 3°C for 48 hrs	70 ± 2°C for 48 hrs	40 ± 2°C, 90 to 95% RH for 96 hrs

**Feature-**  
 samll size  
 full color LED illuminated available  
 long electrical life cycles  
 SMT and vertical PCB terminal

**Applications-**  
 consumer products  
 computer products  
 instrumentation  
 communication equipments

LED SPECIFICATIONS								
 ATTENTION (+) (-) LEDs are Electrostatic Sensitive devices		Unit	Value / LED Color					
			Blue	Green	Red	White	Yellow	
FORWARD CURRENT	If	mA	20	20	20	20	20	20
REVERSE VOLTAGE	Vr	V	5.0	5.0	5.0	5.0	5.0	5.0
REVERSE CURRENT	Ir	μA	10	10	10	10	10	10
FORWARD VOLTAGE	Vf	V	2.8-3.4	1.8-2.4	1.8-2.4	2.8-3.8	1.8-2.9	1.8-2.9

# LD-0-C0-C



## Ordering Guide:

TS Series - Led Color - Housing Model & Color - Cap Model & Color

. TS Series

. Led Color

1=Red 2=Green 3=Orange 0=Without Led 7=Blue

. Housing Model & Color

Model: A=Square B=Round C=Without Housing

Color: 5=Gray 6=Black 0=Without Housing

. Cap Model & Color

Model: A=Square without Led B=Square with Led

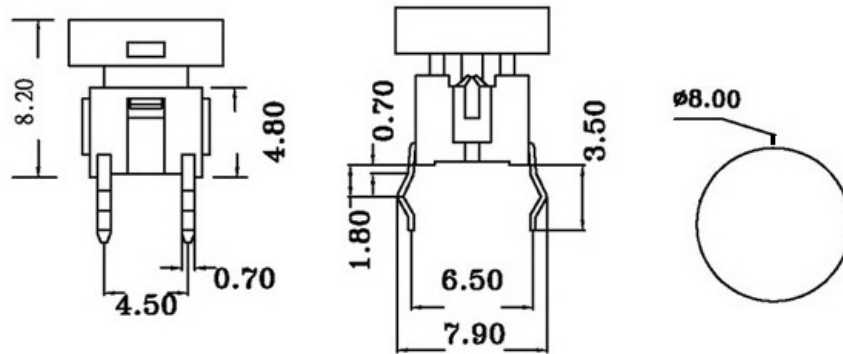
C=Round without Led D=Round with Led

E = Without Cap

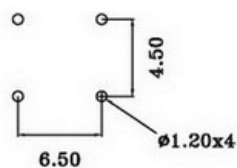
Color: 1=Red 2=Green 3=Orange 4=Ivory 5=Gray

6=Black 0=Without Cap

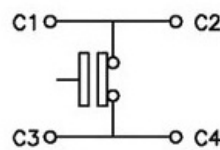
<http://pady-switch.com>



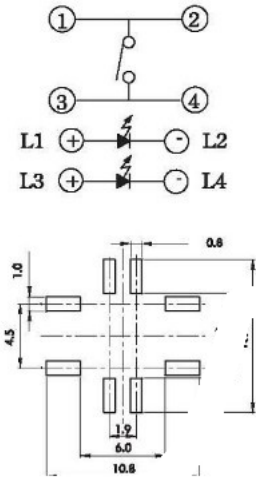
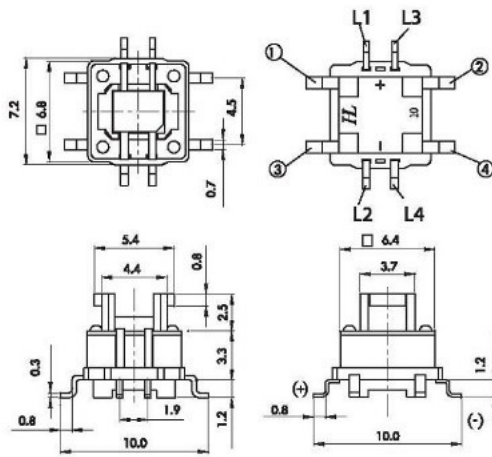
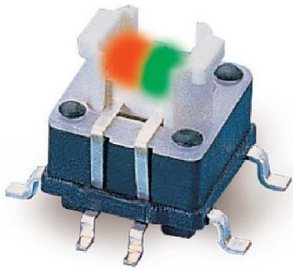
P.C.B. Mounting



Circuit Diagram

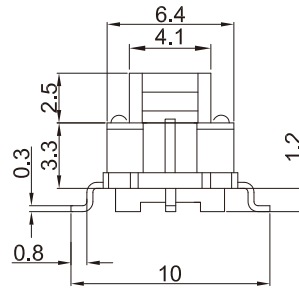
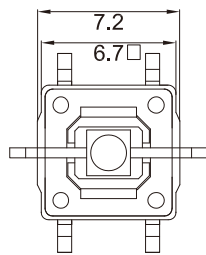


LD3-P-00G-2S

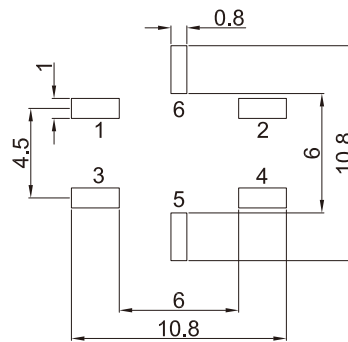
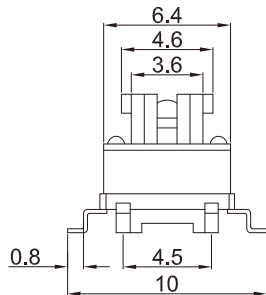


<http://pady-switch.com>

LD1-00-00U-0P

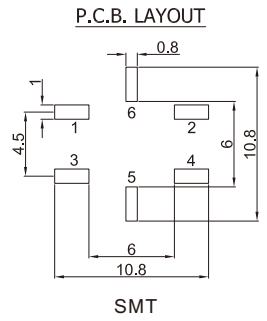
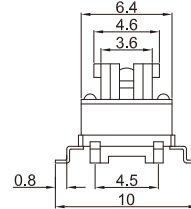
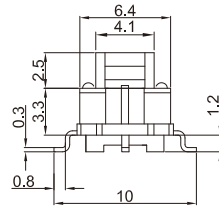
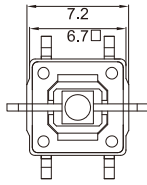


P.C.B. LAYOUT

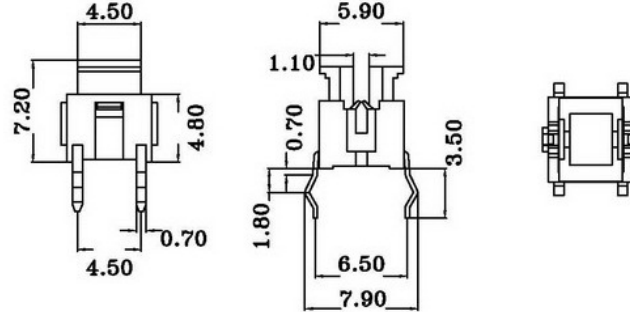
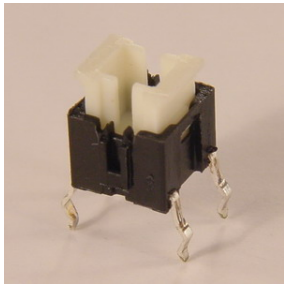


SMT

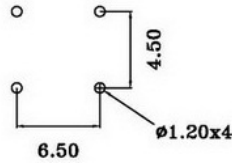
LD1-00-00U-0T



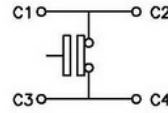
LD-0-C0-E0



P.C.B. Mounting

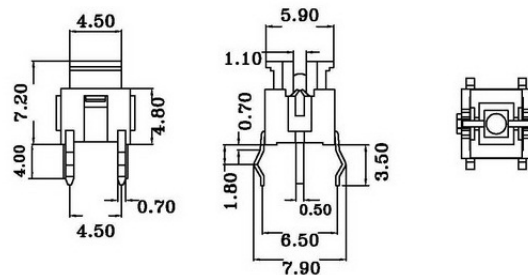
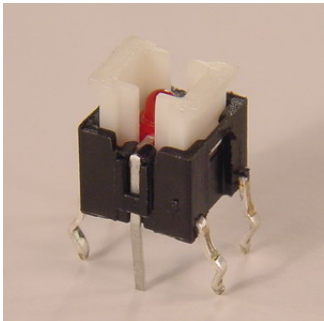


Circuit Diagram

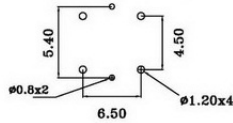


<http://pady-switch.com>

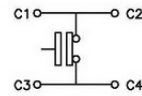
LD-C0-E1



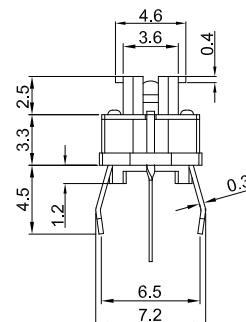
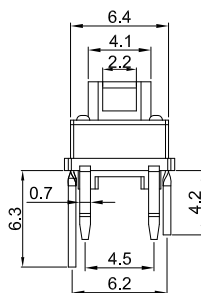
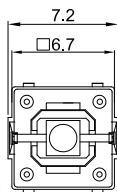
P.C.B. Mounting



Circuit Diagram



LD3-00R-2S



CIRCUIT

